

**TECHNICAL MANUAL**

**ORGANIZATIONAL, DIRECT SUPPORT, AND  
GENERAL SUPPORT MAINTENANCE REPAIR  
PARTS AND SPECIAL TOOLS LIST  
(INCLUDING DEPOT MAINTENANCE REPAIR  
PARTS AND SPECIAL TOOLS)**

**FOR**

**TEST SET, TELEPHONE**

**AN/PTM-7**

**(NSN 6625-00-902-7574)**

<p>This publication has been printed by the UNITED STATES ARMY PUBLICATIONS DISTRIBUTION CENTER, ST. LOUIS, MISSOURI, to meet your needs on a timely basis.</p>
---



TECHNICAL MANUAL }  
 No. 11-6625-648-24P-1 }

HEADQUARTERS  
 DEPARTMENT OF THE ARMY,  
 WASHINGTON, DC, 25 August 1983

**ORGANIZATIONAL, DIRECT SUPPORT, AND GENERAL SUPPORT  
 MAINTENANCE REPAIR PARTS AND SPECIAL TOOLS LIST  
 (INCLUDING DEPOT MAINTENANCE REPAIR PARTS  
 AND SPECIAL TOOLS)  
 FOR  
 TEST SET, TELEPHONE AN/PTM-7 (NSN 6625-00-902-7574)**

Current as of 23 March 1983

**REPORTING ERRORS AND RECOMMENDING IMPROVEMENTS**  
 You can help improve this manual. If you find any mistakes or if you know of a way to improve the procedures, please let us know. Mail your letter, DA Form 2028 (Recommended Changes to Publication and Blank Forms), or DA Form 2028-2 located in the back of this manual direct to Commander, US Army Communications-Electronics Command and Fort Monmouth, ATTN: DR-SEL-ME-MP, Fort Monmouth, NJ 07703.  
 In either case, a reply will be furnished direct to you.

**Table of Contents**

SECTION		Page	Illus Figure
I.	Introduction.....	1	
II.	Repair Parts List.....	5	
GROUP	00 Test Set, Telephone AN/PTM-7 .....	5	1
	01 Test Set, Telephone TS-1323/PTM-7, Front Panel.....	9	2
	Test Set, Telephone TS-1323/PTM-7, Internal Views .....	13	3
	Test Set, Telephone TS-1323/PTM-7, Chassis. ....	17	4
	0101 Case Assembly, Test Set.....	9	5
	010101 Case Assembly, Bottom .....	21	6
	010102 Case Assembly, Top .....	23	7
	0102 Panel Assembly PCM Detector, Signaling Detector, Bridge Circuit .....	27	8
	0103 Panel Assembly Metering Circuit (No parts authorized)		
	0104 Panel Assembly Amplifier, Signaling, Transmit, Receive. ....	31	9
	02 Headset-Microphone H-91A/U (See TM 11-5965-206-14P for parts)		
	03 Probes, Order Wire and PCM (No parts authorized)		
SECTION	III. Special Tools List (Not applicable)		
	IV. National Stock Number and Part Number Index.....	33	

\* This manual supersedes TM 11-6625-448-24P, 28 March 1975.



# SECTION I

## INTRODUCTION

### 1. Scope

This manual lists spares and repair parts; special tools; special test, measurement, and diagnostic equipment (TMDE), and other special support equipment required for performance of organizational, direct support, and general support maintenance of Test Set, AN/PTM-7. It authorizes the requisitioning and issue of spares and repair parts as indicated by the source and maintenance codes.

### 2. General

This Repair Parts and Special Tools List is divided into the following sections:

*a. Section II. Repair Parts List.* A list of spares and repair parts authorized for use in the performance of maintenance. The list also includes parts which must be removed for replacement of the authorized parts. Parts lists are composed of functional groups in numeric sequence, with the parts in each group listed in figure and item number sequence.

*b. Section III. Special Tools List.* Not applicable.

*c. Section IV. National Stock Number and Part Number Index.* A list, in National item identification number (NIIN) sequence, of all National stock numbers (NSN) appearing in the listings, followed by a list, in alphanumeric sequence, of all part numbers appearing in the listings. National stock numbers and part numbers are cross-referenced to each illustration figure and item number appearance.

### 3. Explanation of Columns

*a. Illustration.* This column is divided as follows:

(1) *Figure number.* Indicates the figure number of the illustration on which the item is shown.

(2) *Item number.* The number used to identify item called out in the illustration.

*b. Source Maintenance, and Recoverability (SMR) Codes.*

(1) *Source code.* Source codes indicate the manner of acquiring support items for maintenance, repair, or overhaul of end items. Source codes are entered in the first and second positions of the Uniform SMR Code format as follows:

<i>Code</i>	<i>Definition</i>
PA-	Item procured and stocked for anticipated or known usage.

<i>Code</i>	<i>Definition</i>
PB-	Item procured and stocked for insurance purpose because essentiality dictates that a minimum quantity be available in the supply system.
XA-	Item is not procured or stocked because the requirements for the item will result in the replacement of the next higher assembly.
XB-	Item is not procured or stocked. If not available through salvage, requisition.

#### NOTE

Cannibalization or salvage may be used as a source of supply for any items source coded above except those coded XA and aircraft support item as restricted by AR 700-42.

(2) *Maintenance code.* Maintenance codes are assigned to indicate the levels of maintenance authorized to USE and REPAIR support items. The maintenance codes are entered in the third and fourth positions of the Uniform SMR Code format as follows:

(a) The maintenance code entered in the third position will indicate the lowest maintenance level authorized to remove, replace, and use the support item. The maintenance code entered in the third position will indicate one of the following levels of maintenance:

<i>Code</i>	<i>Application/Explanation</i>
O-	Support item is removed, replaced, used at the organizational level.
H-	Support item is removed, replaced, used at the general support level.

(b) The maintenance code entered in the fourth positions indicates whether the item is to be repaired and identifies the lowest maintenance level with the capability to perform complete repair (i.e., all authorized maintenance functions). This position will contain one of the following maintenance codes:

<i>Code</i>	<i>Application/Explanation</i>
F-	The lowest maintenance level capable of complete repair of the support item is the direct support level.

<i>Code</i>	<i>Application/Explanation</i>
H-	The lowest maintenance level capable of complete repair of the support item is the general support level.
Z-	Nonreparable. No repair is authorized.

(3) *Recoverability code.* Recoverability codes are assigned to support items to indicate the disposition action on unserviceable items. The recoverability code is entered in the fifth position of the Uniform SMR Code format as follows:

<i>Recoverability codes</i>	<i>Definition</i>
Z-	Nonreparable item. When unserviceable, condemn and dispose at the level indicated in position 3.
F-	Reparable item. When uneconomically repairable, condemn and dispose at the direct support level.
H-	Reparable item. When uneconomically repairable, condemn and dispose at the general support level.

*c. National Stock Number.* Indicates the National stock number assigned to the item and will be used for requisitioning purposes.

*d. Federal Supply Code for Manufacturer (FSCM).* The FSCM is a 5-digit numeric code listed in SB 708-41/42 which is used to identify the manufacturer, distributor, or Government agency, etc.

*e. Part Number.* Indicates the primary number used by the manufacturer (individual company, firm, corporation or Government activity), which controls the design and characteristics of the item by means of its engineering drawings, specifications, standards, and inspection requirements to identify an item or range of items.

**NOTE**

When a stock numbered item is requisitioned, the repair part received may have a different part number than the part being replaced.

*f. Description.* Indicates the Federal item name and if required, a minimum description to identify the item.

*g. Unit of Measure (U/M).* Indicates the standard of the basic quantity of the listed item as used in performing the actual maintenance function. This measure is expressed by a two-character alphabetical abbreviation (e.g., ea, in, pr, etc). When the unit of measure differs from the unit of issue, the lowest unit of issue that will satisfy the required units of measure will be requisitioned.

*h. Quantity Incorporated in Unit.* Indicates the quantity of the item used in the breakout shown on

the illustration figure, which is prepared for a functional group, subfunctional group, or an assembly.

**4. Special Information**

*a.* The following publication pertains to the AN/PTM-7 and its components:

TM 11-5965-206-145 Headset-Microphone H-91A/U; Handset-Headset H-144/U, H-144A/U, H-144B/U, and H-144C/U; and Headset-Microphone H-210/G

TM 11-6625-648-12, Test Set, Telephone AN/PTM-7

TM 11-6625-648-45, Test Set, Telephone AN/PTM-7

*b.* National stock numbers (NSN's) that are missing from P source coded items have been applied for and will be added to this TM by future change/revision when they are entered in the Army Master Data File (AMDF). Until the NSN's are established and published submit exception requisitions to Commander, US Army Communications-Electronics Command and Fort Monmouth, ATTN: DRSELM, Fort Monmouth, NJ 07703 for the part required to support your equipment.

**5. How to Locate Repair Parts**

*a.* When National stock number or part number is unknown.

(1) *First.* Using the table of contents, determine the functional group within which the item belongs. This is necessary since illustrations are prepared for functional groups and listings are divided into the same groups.

(2) *Second.* Find the illustration covering the functional group to which the item belongs.

(3) *Third.* Identify the item on the illustration and note the illustration figure and item number of the item.

(4) *Fourth.* Using the Repair Parts Listing, find the figure and item number noted on the illustration.

*b.* When National stock number or part number is known.

(1) *First.* Using the index of National Stock Numbers and Part Numbers, find the pertinent National stock number or part number. This index is in NIIN sequence followed by a list of part numbers in alphanumeric sequence, cross-referenced to the illustration figure number and item number.

(2) *Second.* After finding the figure and item number, locate the figure and item number in the repair parts list.

**6. Abbreviations**

Not applicable.



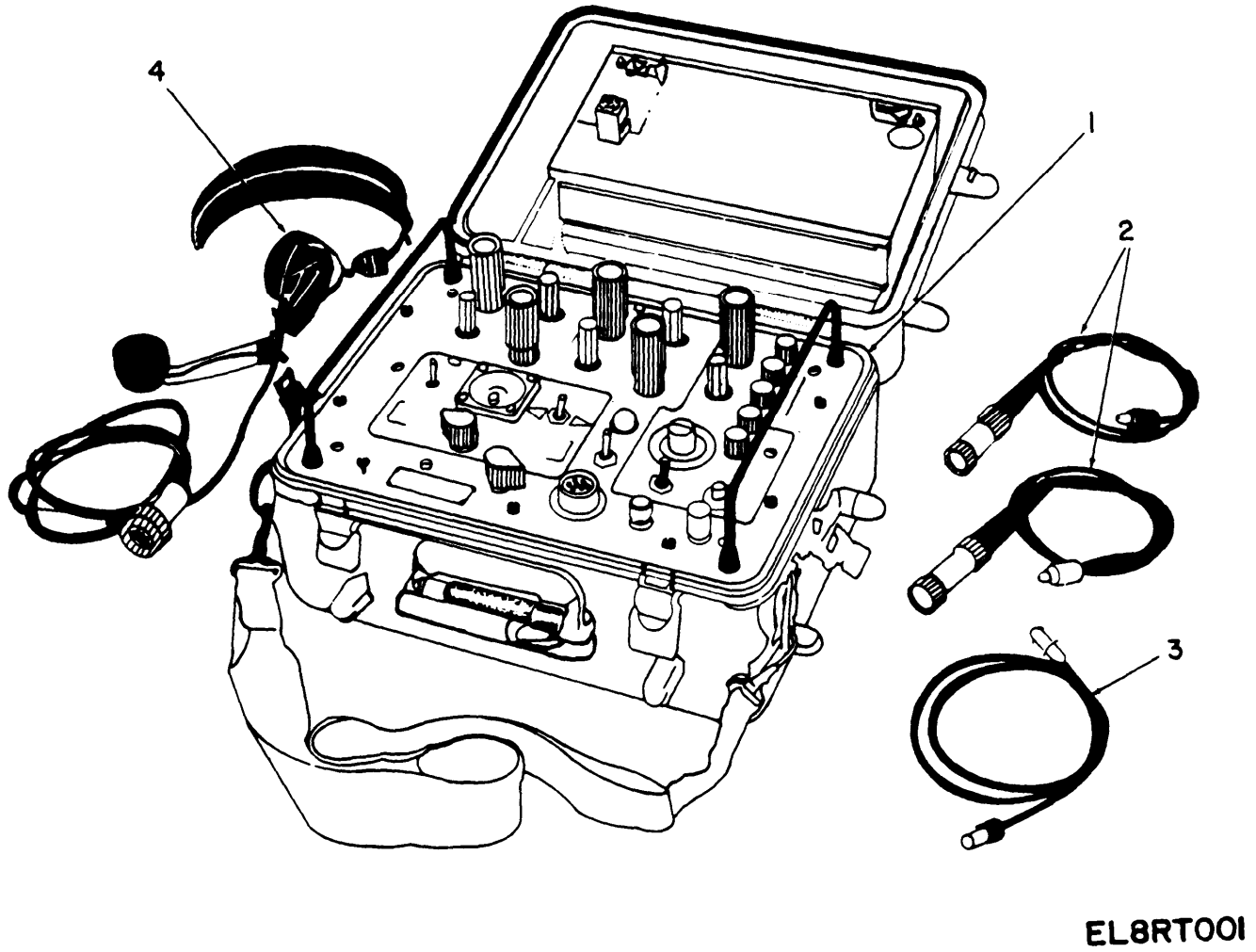


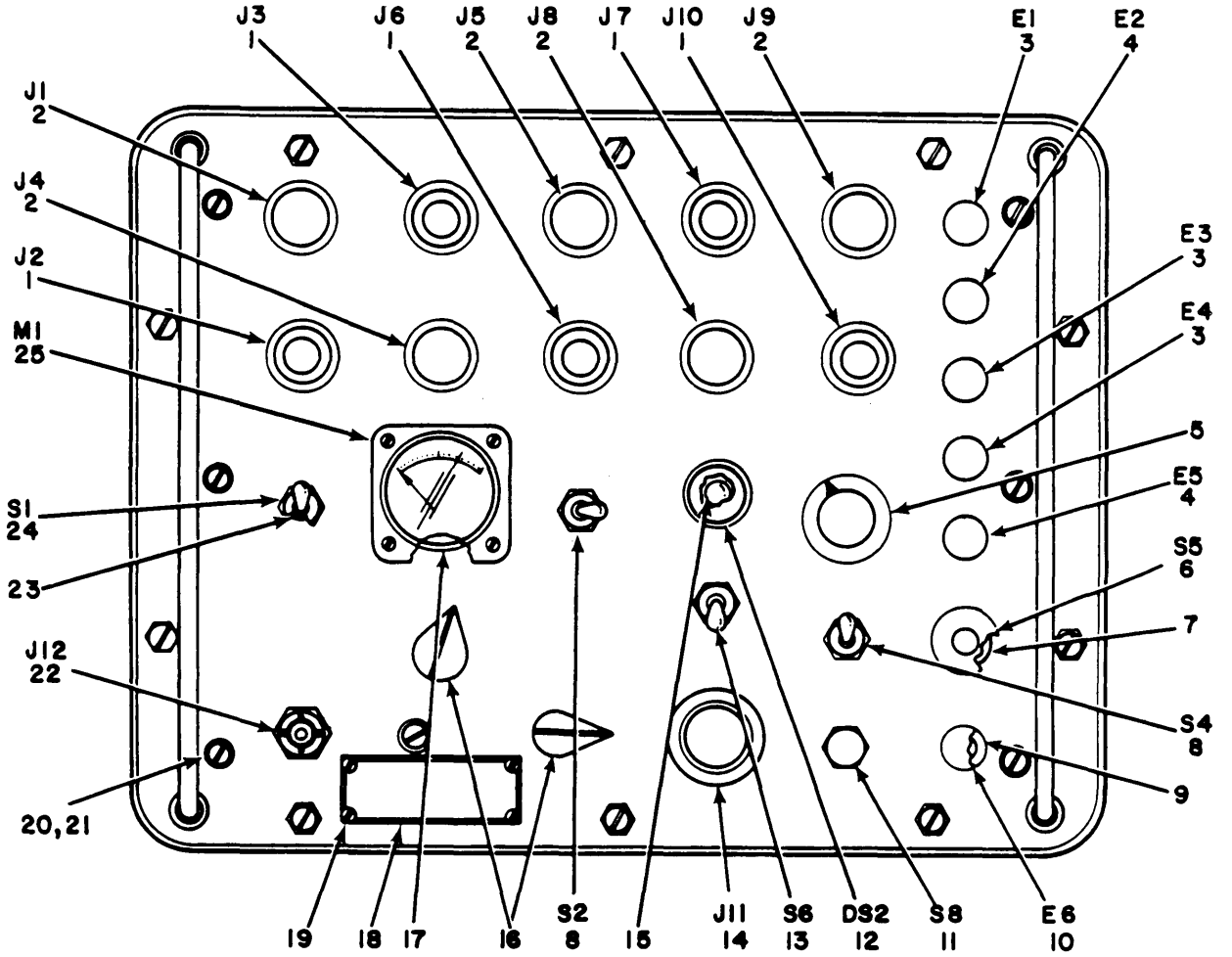
Figure 1. Test Set, Telephone AN/PTM-7.



SECTION II

(1)	(2)	(3)	(4)	(5)	(6)	(7)	(8)	
ILLUSTRATION					DESCRIPTION		QTY	
(a)	(b)	NATIONAL					INC	
FIG	ITEM	SMR	STOCK	PART			IN	
NO	NO	CODE	NUMBER	FSCM	NUMBER	USABLE ON CODE	U/M	UNIT
GROUP 00 TEST SET, TELEPHONE AN/PIN-7								
1	1	PAGHH	6625-00-900-9416	80058	TS-1323/PTM-7		EA	1
1	2	PAOZZ		80058	CX-10354/PTM-7		EA	2
1	3	PAOZZ	6625-00-941-3000	80063	SM-C-528074		EA	1
1	4	PAOFF	5965-00-669-6871	81349	H91A/U		EA	1

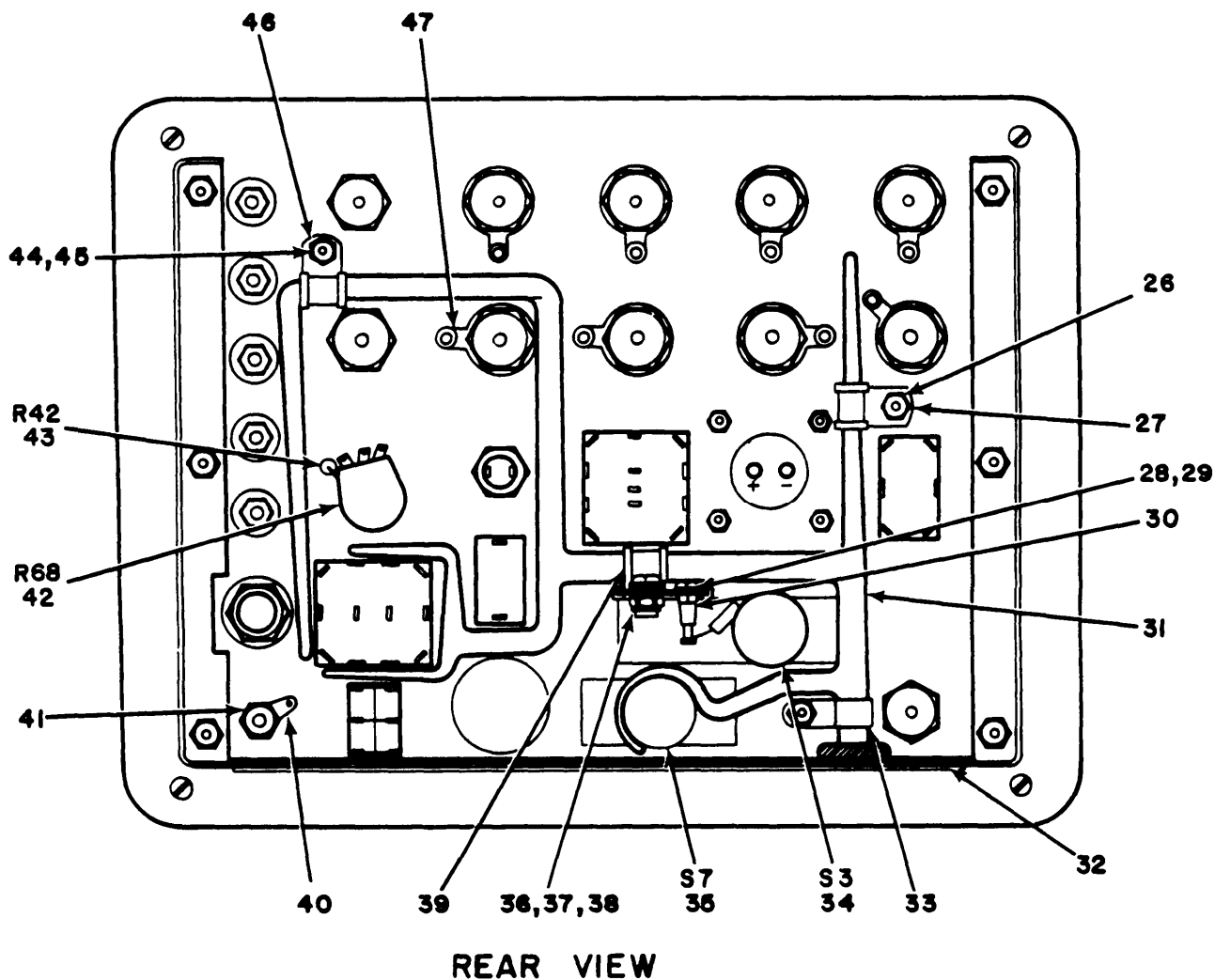




FRONT VIEW

EL8RT002

Figure 2. Test Set, Telephone TS-1323/PTM-7, Front Panel (Sheet 1 of 2).



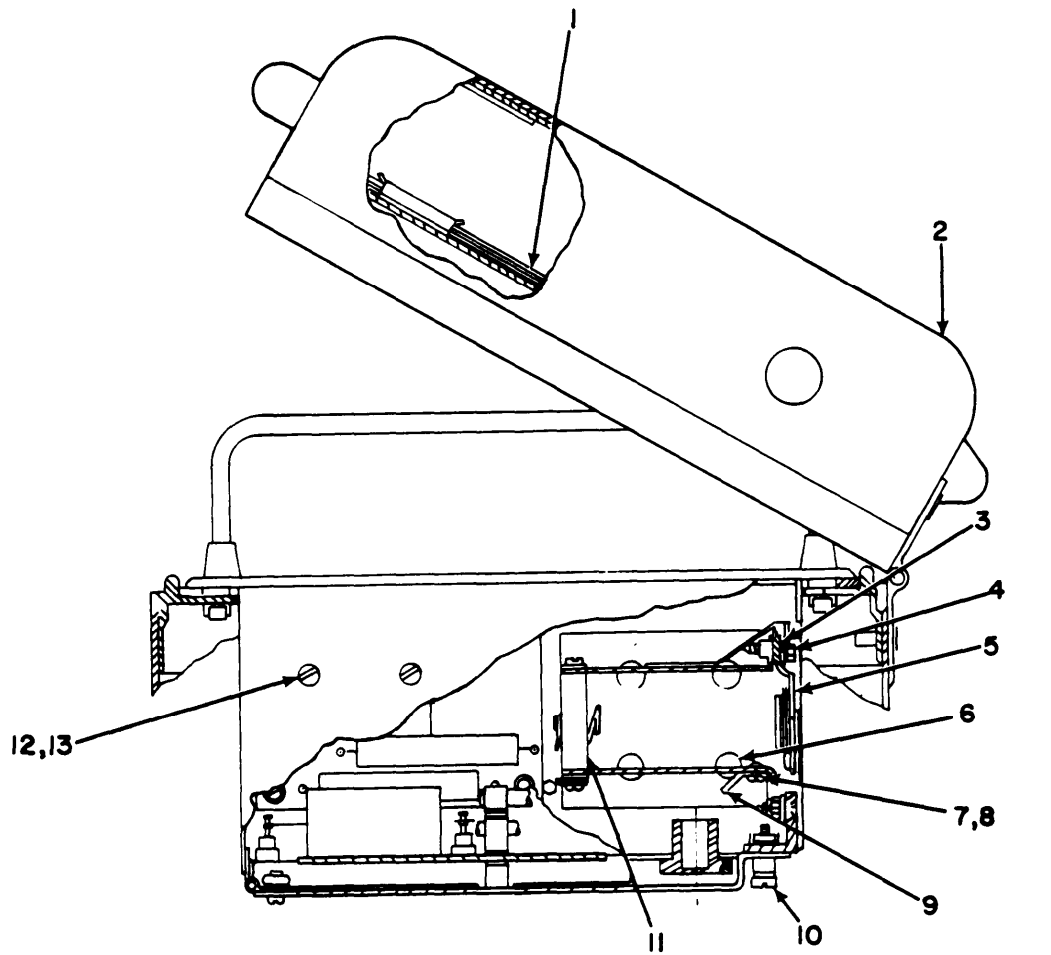
EL8RT003

Figure 2. Test Set, Telephone TS-1323/PTM-7, Front Panel (Sheet 2 of 2).

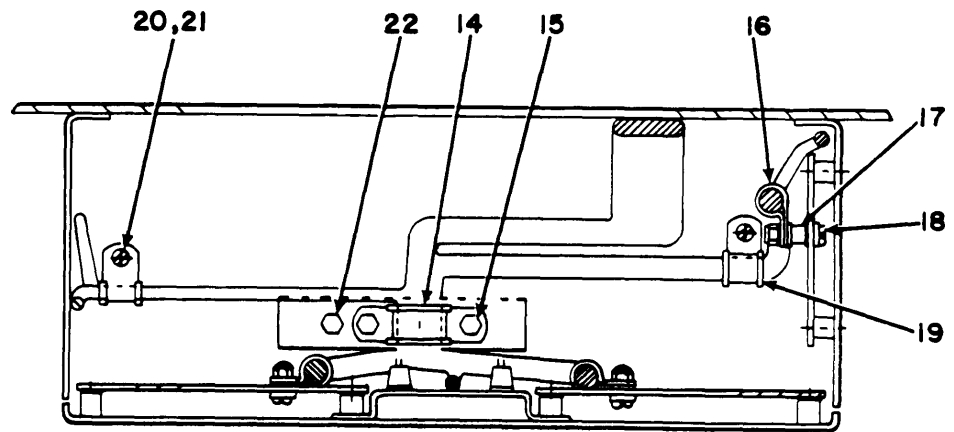
SECTION II		(2)	(3)	(4)	(5)	(6)	(7)	(8)
(1)	ILLUSTRATION		NATIONAL		PART	DESCRIPTION		QTY
FIG	(a) (b)	SMR	STOCK	FSCM	NUMBER		U/M	INC
NO	NO	CODE	NUMBER			USABLE ON CODE		IN
								UNIT
						GROUP 01 TEST SET, TELEPHONE TS-1323/PIM-		
						7 FRONT PANEL		
2	1	PAHZZ	5935-00-946-1272	80063	SM-C-528133	CONNECTOR, PLUG, ELEC	EA	5
2	2	PAHZZ	5935-00-926-0649	80063	SM-C-528134	CONNECTOR, RECEPTACL	EA	5
2	3	PAHZZ	5940-00-926-8162	81349	PB08NA02	POST, BINDING, ELECTR	EA	3
2	4	PAHZZ	5940-00-937-5237	81349	PB08NA01	POST, BINDING, ELECTR	EA	2
2	5	PAOZZ	5355-00-682-6753	96906	MS91528-1F1B	KNOB	EA	1
2	6	PAHZZ	5930-00-914-6364	80063	SM-B-528043	SWITCH, PUSH	EA	1
2	7	PAHZZ	5330-00-248-3842	96906	MS29513-017	PACKING, PREFORMED	EA	1
2	8	PAHZZ	5930-00-655-1581	96906	MS25068-23	SWITCH, TOGGLE	EA	2
2	9	PAHZZ	5330-00-159-3238	80063	SM-B-528094	GASKET	EA	1
2	10	PAHZZ	5940-00-242-0952	80063	SM-B-528545-1	POST, BINDING	EA	1
2	11	PAHZZ	5930-00-918-7806	80063	SM-B-528024	SWITCH, PUSH-PULL	EA	1
2	12	PAHZZ		80063	SM-B-528029	LIGHT, INDICATOR	EA	1
2	13	PAHZZ	5930-00-655-1514	96906	MS35058-22	SWITCH, TOGGLE	EA	1
2	14	PAHZZ	5935-00-549-2646	81349	U-79/U	CONNECTOR, RECEPTACL	EA	1
2	15	PAOZZ	6240-00-155-7857	96906	MS25237-328	LAMP, INCANDESCENT	EA	2
2	16	PAOZZ	5355-00-556-0145	96906	MS91528-1K2B	KNOB	EA	2
2	17	PAHZZ	5330-00-551-8251	96906	MS9021-02B	PACKING, PREFORMED	EA	1
2	18	PBHZZ		80063	SM-B-528095	PLATE, IDENT	EA	1
2	19	PAHZZ	5305-00-032-4197	80063	SM-B-526603-1	SCREW	EA	4
2	20	PAHZZ	5305-00-054-6671	96906	MS51957-46	SCREW, MACHINE	EA	9
2	21	PAHZZ	5330-00-159-3264	80063	SM-B-528555-2	PACKING, PREFORMED	EA	9
2	22	PAHZZ		80063	SM-B-529173-2	CONNECTOR, RECEPTACL	EA	1
2	23	PAHZZ	5330-00-806-8769	96906	MS25196-1	PACKING WITH RETAIN	EA	4
2	24	PAHZZ	5930-00-655-1582	96906	MS35059-23	SWITCH, TOGGLE	EA	1
2	25	PAHZZ	6625-00-935-1375	80063	SM-B-528137	VOLTMETER	EA	1
2	26	PAHZZ		80063	SM-B-527621-3	NUT, PLAIN, CAP	EA	1
2	27	PAHZZ	5340-00-078-3615	96906	MS21322-33	CLAMP, LOOP	EA	2
2	28	PAHZZ	5310-00-550-3715	96906	MS35333-70	WASHER, LOCK	EA	2
2	29	PAHZZ	5305-00-054-5646	96906	MS51957-12	SCREW MACHINE	EA	7
2	30	PAHZZ		80063	SM-B-526614	TERMINAL, STUD	EA	2
2	31	XBHZZ		80063	SM-E-528112	WIRING HARNESS	EA	1
2	32	PAHZZ	5325-00-960-2410	96906	MS21266-1N	GROMMET, NONMETALLIC	Fl	V
2	33	PAHZZ		96906	MS21322-38	CLAMP, LOOP	EA	1
2	34	PAHZZ	5930-00-947-1911	80063	SM-C-528126	SWITCH ASSEMBLY	EA	1
2	35	PAHZZ	5930-00-947-1912	80063	SM-C-528125	SWITCH, ROTARY	EA	1
2	36	PAHZZ	5310-00-982-6813	96906	MS21044CU6	NUT, SELF-LOCKING, HE	EA	25
2	37	PAHZZ	5305-00-054-6653	96906	MS51957-29	SCREW, MACHINE	EA	15
2	38	PAHZZ		80063	SM-B-527553-10	WASHER, FLAT	EA	

SECTION II

(1)	(2)	(3)	(4)	(5)	(6)	(7)	(8)	
ILLUSTRATION					DESCRIPTION		QTY	
(a)	(b)	NATIONAL		PART			INC	
FIG	ITEM	SMR	STOCK				IN	
NO	NO	CODE	NUMBER	FSCM	NUMBER	USABLE ON CODE	U/M	
							UNIT	
2	39	PAHZZ	5340-00-964-2555	80205	NAS1397P6N	CLAMP, LOOP	EA	1
2	40	PAHZZ		80063	SM-8-528546	TERMINAL LUG	EA	1
2	41	PAHZZ	5310-00-159-6220	80063	SM-B-528539	NUT, PLAIN, HEXAGON	EA	1
2	42	PAHZZ	5905-00-917-7066	80063	SM-B-528044	RESISTOR, VARIABLE,	EA	1
2	43	PAHZZ		81349	RNC60J2870FS	RESISTOR, FIXED, FILM	EA	1
2	44	PAHZZ	5310-00-982-6814	96906	MS21044C08	NUT, SELF-LOCKING,	EA	3
2	45	PAHZZ	5310-00-880-5978	96906	MS15795-807	WASHER, FLAT	EA	4
2	46	PAHZZ		80205	NAS1397R2B	CLAMP, LOOP	EA	2
2	47	PAHZZ		80063	SM-B-528042	TERMINAL LUG	EA	8



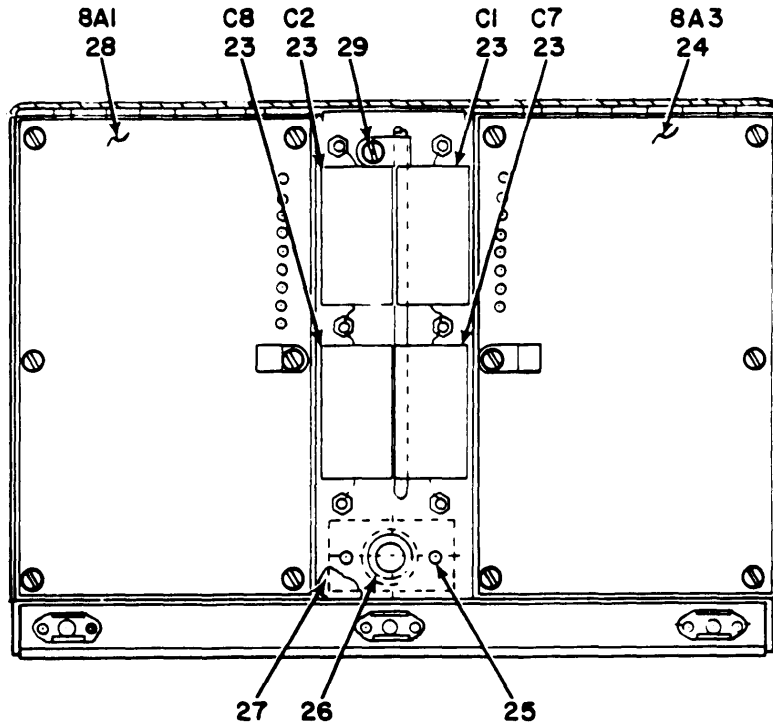
PARTIAL RIGHT SIDE VIEW



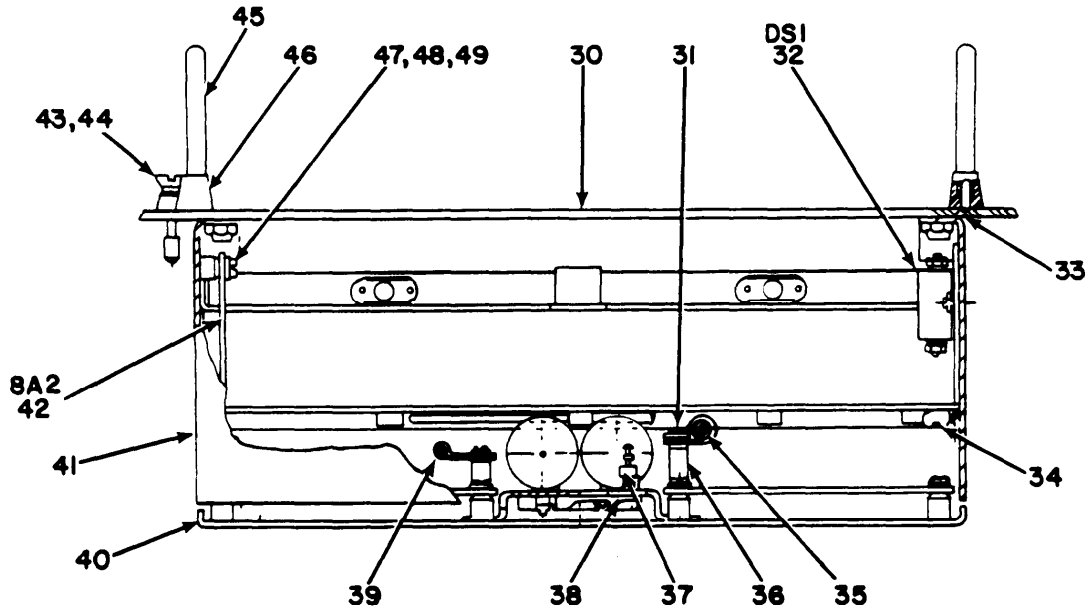
FRONT VIEW

EL8RT004

Figure 3. Test Set, Telephone TS-1323/PTM-7, Internal Views (Sheet 1 of 2).



TOP VIEW



BOTTOM VIEW

EL8RT005

Figure 3. Test Set, Telephone TS-1323/PTM-7, Internal Views (Sheet 2 of 2).



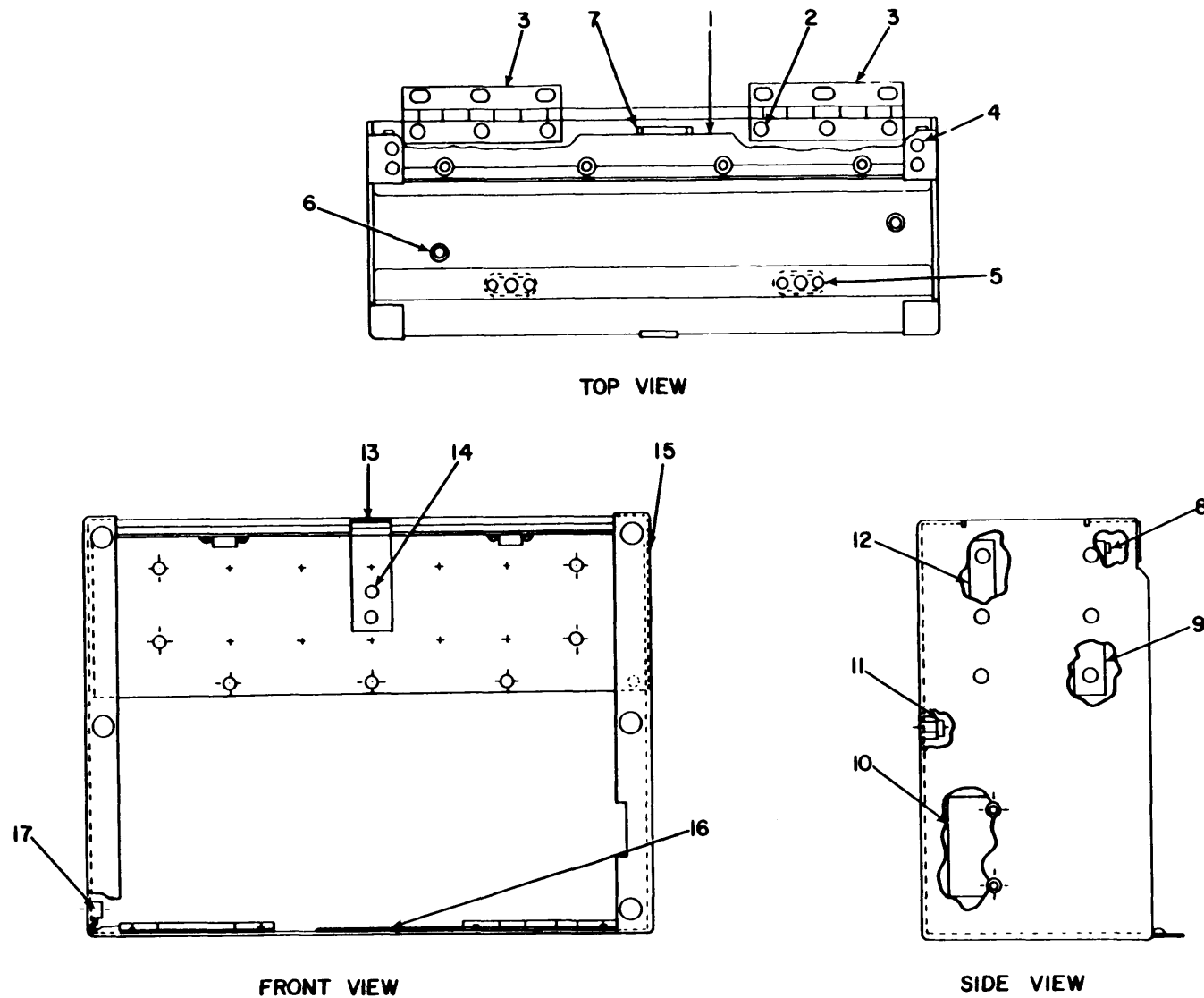
SECTION II

(1)	(2)	(3)	(4)	(5)	(6)	(7)	(8)
ILLUSTRATION					DESCRIPTION		QTY
(a)	(b)	NATIONAL		PART			INC
FIG	ITEM	STOCK		NUMBER		USABLE ON CODE	IN
NO	NO	NUMBER	FSCM	NUMBER			UNIT
3	1	PBOZZ		80063	SM-C-528098		EA 1
3	2	PAOHH	5910-00-089-4429	73849	VCJ2442		EA 1
3	3	PAHZZ		80063	SM-B-528169		EA 2
3	4	PAHZZ		80063	SM-B-528627-3		EA 3
3	5	PAHZZ		80063	SM-D-528100		EA
3	6	PAHZZ		80063	SM-B-528155-2		EA 2
3	7	PAHZZ	5305-00-054-5647	96906	MS51957-13		EA 1
3	8	PAHZZ	5310-00-271-4642	96906	MS35649-44		EA 1
3	9	PAHZZ		80063	SM-B-528643-1		EA 1
3	10	PAHZZ	5305-00-032-4119	80063	SM-B-528627-4		EA 3
3	11	PAHZZ		80063	SM-D-528099		EA 1
3	12	PAHZZ		88044	AN510C3-5		EA 2
3	13	PAHZZ		80063	SM-B-529127-2		EA 2
3	14	PAHZZ		80063	SM-B-528157-1		EA 1
3	15	PAHZZ	5305-00-022-7100	96906	MS35249-36		EA 2
3	16	PAHZZ	5340-00-782-8737	80205	NAS1397P4N		EA 3
3	17	PAHZZ	5365-00-302-8098	80204	NAS43DD1-16		EA 2
3	18	PAHZZ	5305-00-054-6656	96906	MS51957-32		EA 2
3	19	PAHZZ	5340-00-419-0840	96906	MS21322-35		EA 1
3	20	PAHZZ	5305-00-054-6654	96906	MS51957-30		EA 4
3	21	PAHZZ	5310-00-616-3555	96906	MS35333-71		EA 2
3	22	PAHZZ	5305-00-763-7822	96906	MS51959-14		EA 1
3	23	PAHZZ	5910-00-999-6710	80063	SM-B-528003		EA 4
3	24	PAOHH	6625-00-941-2997	80063	SM-D-528008		EA 1
3	25	PAHZZ	5320-00-117-6952	96906	MS20426AD4-7		EA 2
3	25	PAHZZ		80063	SM-B-528086		EA 1
3	27	XBHZZ		80063	SM-B-528088		EA 1
3	28	PAOHH	6625-00-641-2987	80063	SM-D-528004		EA 1
3	29	PAHZZ	5305-00-054-6652	96906	MS51957-28		EA 7
3	30	XBHZZ		80063	SM-E-528092		EA 1
3	31	PAHZZ	5305-01-015-4965	96906	MS35233-34		EA 1
3	32	PAHZZ	6350-00-926-1321	80063	SM-B-528021		EA 1
3	33	PAHZZ	5305-00-719-5064	96906	MS51959-30		EA 3
3	34	PAHZZ		80063	SM-B-526623		EA 4
3	35	PAHZZ	5340-00-449-4506	80205	NAS1397R58		EA 1
3	36	PAHZZ	5365-00-302-8099	80205	43DD1-32		EA 1
3	37	PAHZZ		81349	SE209D0-1		EA 6
3	38	PAHZZ	5310-00-193-7577	96906	MS35333-36		EA 6
3	39	PAHZZ	5340-00-172-8382	80205	NAS1397R3B		EA 1
3	40	XBOHH		80063	SM-E-528093		EA 1

## SECTION II

(1)	(2)	(3)	(4)	(5)	(6)	(7)	(8)	
ILLUSTRATION					DESCRIPTION		QTY	
(a)	(b)	NATIONAL		PART			INC	
FIG	ITEM	SMR	STOCK				IN	
NO	NO	CODE	NUMBER	FSCM	NUMBER	USABLE ON CODE	U/M	
							UNIT	
3	41	PAHZZ		80063	SM-E-528106	CHASSIS,TEST SET	EA	1
3	42	PAOZZ	6625-00-929-8405	80063	SM-C-528006	TEST SET SUBASSEMBL	EA	1
3	43	PAHZZ	5330-00-159-3271	80063	SM-B-528555-3	PACKING,PREFORMED	EA	10
3	44	PAOZZ	5305-00-937-1776	80063	SM-B-422926-1	SCREW,EXTERNALLY RE	EA	10
3	45	XBHZZ		80063	SM-B-528087	HANDLE,BOW	EA	2
3	46	XBOZZ		80063	SM-B-528085	BUSHING,TAPERED	EA	4
3	47	PAOZZ	5305-00-054-6651	96906	MS51957-27	SCREW,MACHINE	EA	
3	48	PAOZZ		80063	SM-B-527552-2	WASHER,NYLON	EA	22
3	49	PAHZZ	5310-00-722-5998	96906	MS15795-805	WASHER,FLAT	EA	48



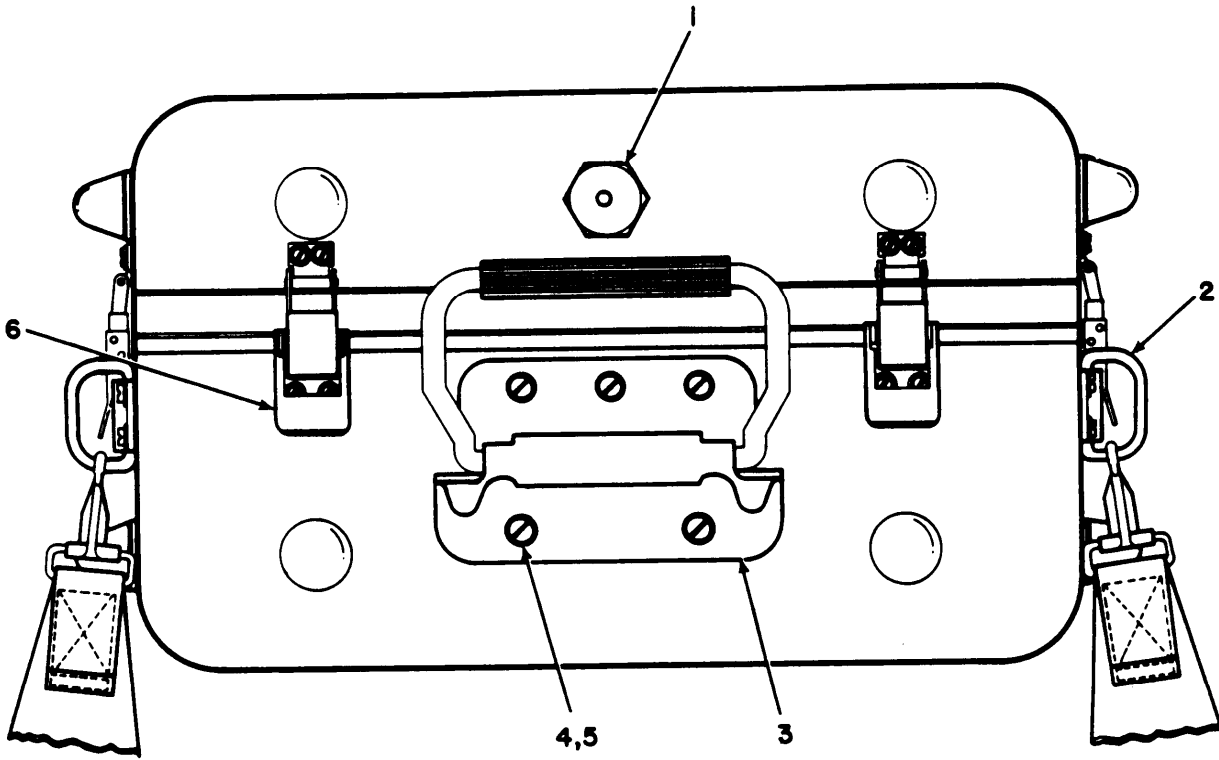


EL8RT006

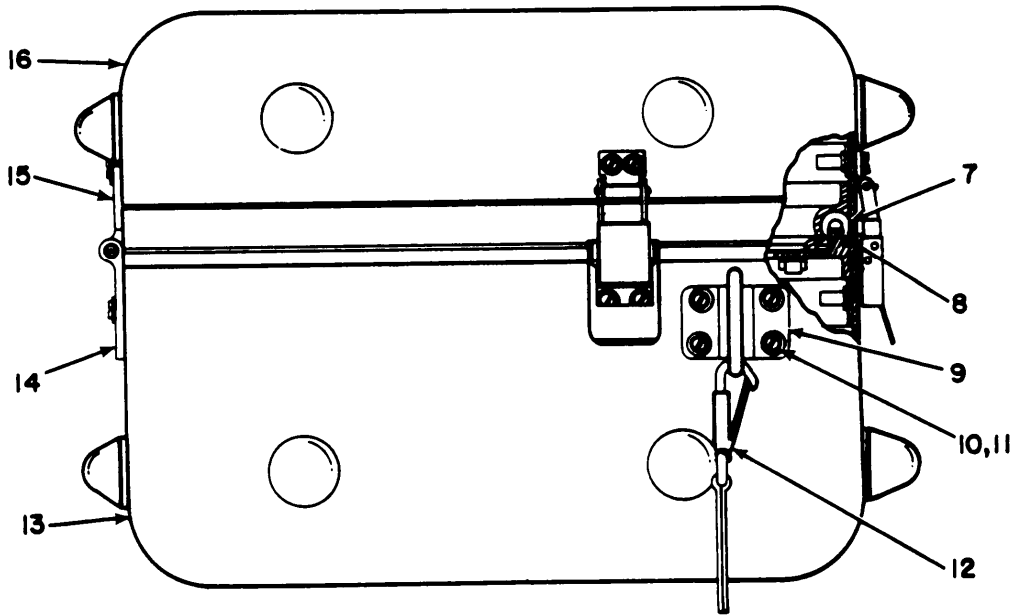
Figure 4. Test Set, Telephone TS-1323/PTM-7, Chassis.

SECTION II

(1)	(2)	(3)	(4)	(5)	(6)	(7)	(8)
ILLUSTRATION					DESCRIPTION		QTY
(a)	(b)	NATIONAL		PART			INC
FIG	ITEM	STOCK	FSCM	NUMBER		USABLE ON CODE	IN
NO	NO	NUMBER					UNIT
4	1	XBHZZ		80063	SM-E-528106-2		EA 1
4	2	PAHZZ	5383-00-117-6950	96906	MS20426AD4-5		EA 18
4	3	XBHZZ		80063	SM-B-528102		EA 5
4	4	PAHZZ	5320-00-117-6951	18876	MS20426AD4-6		EA 4
4	5	PAHZZ	5320-00-117-6938	80063	801118		EA 4
4	6	XBHZZ		96906	SM-B-527043-2		EA 2
4	7	PAHZZ	5320-00-117-6939	96906	MS20426AD3-5		EA 6
4	8	PAHZZ		96906	MS21060-08		EA 5
4	9	XBHZZ		80063	SM-E-528106-5		EA 1
4	10	XBHZZ		80063	SM-E-528106-5		EA 1
4	11	XBHZZ		80063	SM-B-529129-2		EA 6
4	12	XBHZZ		80063	SM-E-528106-4		EA 1
4	13	XBHZZ		80063	SM-B-528145		EA 1
4	14	PAHZZ	5320-00-117-6826	96906	MS20470AD4-4		EA 2
4	15	XBHZZ		80063	SM-E-528106-1		EA 1
4	16	XBHZZ		80063	SM-E-528106-8		EA 1
4	17	XBHZZ		80063	SM-B-527093-GR1		EA 4



FRONT VIEW



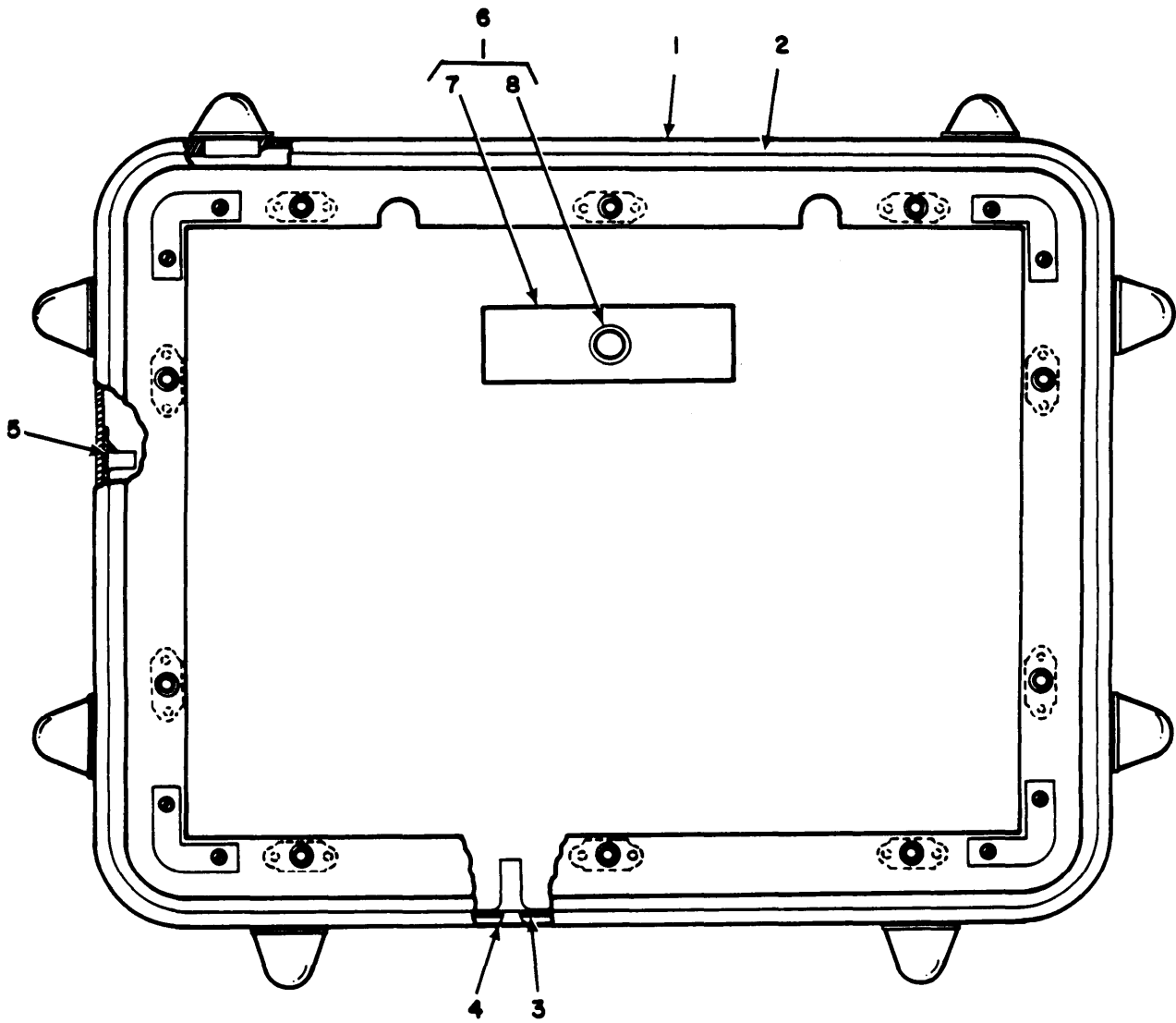
SIDE VIEW

EL8RT007

Figure 5. Case Assembly, Test Set.

SECTION II

(1)	(2)	(3)	(4)	(5)	(6)	(7)	(8)
ILLUSTRATION					DESCRIPTION		QTY
(a)	(b)	NATIONAL		PART			INC
FIG	ITEM	STOCK		NUMBER		USABLE ON CODE	IN
NO	NO	NUMBER	FSCM	NUMBER			UNIT
GROUP 0101 CASE ASSEMBLY, TEST SET							
5	1	PBOZZ		80063 SM-B-528015	VALVE,BREATHER	EA	1
5	2	PAHZZ		96906 MS51925-10	RING,DEE	EA	2
5	3	XBHZZ		80063 SM-B-528070	HANDLE,BAIL	EA	1
5	4	PAHZZ	5305-00-059-3660	96906 MS51958-64	SCREW,MACHINE	EA	
5	5	PAHZZ	5310-00-543-5933	96906 MS35333-73	WASHER,LOCK	EA	
5	6	PAHZZ		80063 SM-B-528135	CATCH,SPRING LOADED	EA	4
5	7	PBHZZ		80063 SM-B-528143	GASKET	EA	1
5	8	PBHZZ		80063 SM-B-528144	GASKET	EA	
5	9	XAHZZ		80063 SM-B-528066	BRACKET	EA	2
5	10	PAOZZ	5305-00-054-6654	96906 MS51957-30	SCREW,MACHINE	EA	36
5	11	PAOZZ	5310-00-616-3555	96906 MS35333-71	WASHER,LOCK	EA	36
5	12	PAOZZ	5975-00-228-0038	81349 MILC6136TYPE2	CONDUIT,METAL,FLEXI	EA	1
5	13	XBOHH		80063 SM-E-528049	CASE ASSY,BOTTOM	EA	1
5	14	PAHZZ		80063 SM-B-528068	HINGE,BOTTOM	EA	2
5	15	PAHZZ		80063 SM-B-528067	HINGE, TOP	EA	2
5	16	XBHZZ		80063 SM-E-528058	CASE ASSY, TOP	EA	1



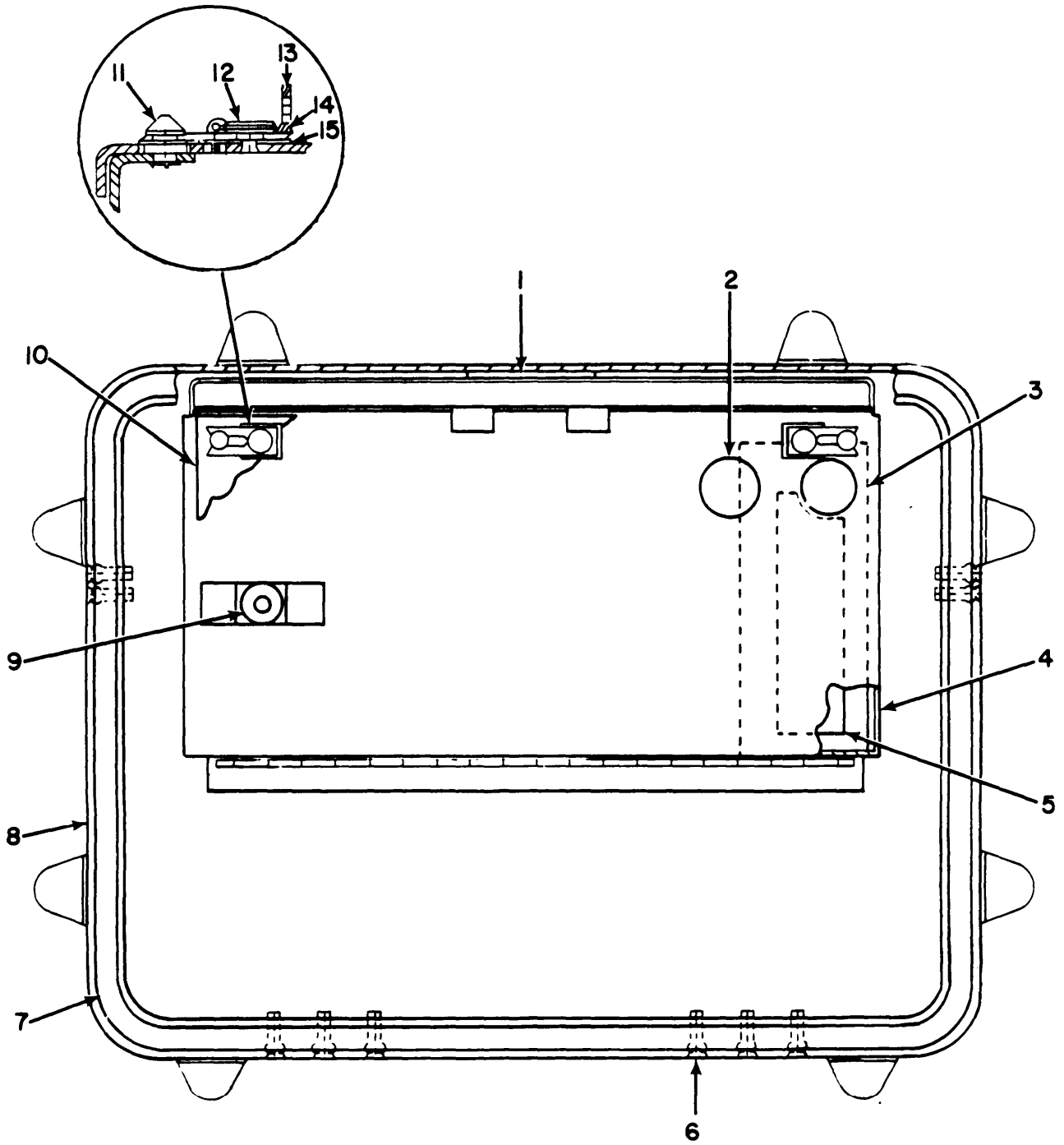
EL8RT008

Figure 6. Case Assembly, Bottom.



SECTION II

(1)	(2)	(3)	(4)	(5)	(6)	(7)	(8)
ILLUSTRATION					DESCRIPTION		QTY
(a)	(b)	NATIONAL		PART			INC
FIG	ITEM	SMR	STOCK	NUMBER		USABLE ON CODE	IN
NO	NO	CODE	NUMBER	FSCM	NUMBER		UNIT
GROUP 010101 CASE ASSEMBLY,BOTTOM							
6	1	XBOHH		80063	SM-D-528050		EA 1
6	2	XBOHH		80063	SM-D-528051		EA 1
6	3	XBOHH		80063	SM-B-528053		EA 1
6	4	XAHZZ		80205	NAS13303B166		EA 5
6	5	PAHZZ		80205	NAS1330068161		EA 22
6	6	XBHZZ		80063	SM-B-528056		EA 1
6	7	XBHZZ		80063	SM-B-528056-1		EA 1
6	8	XBHZZ		80063	SM-B-528057		EA 1



EL8RT009

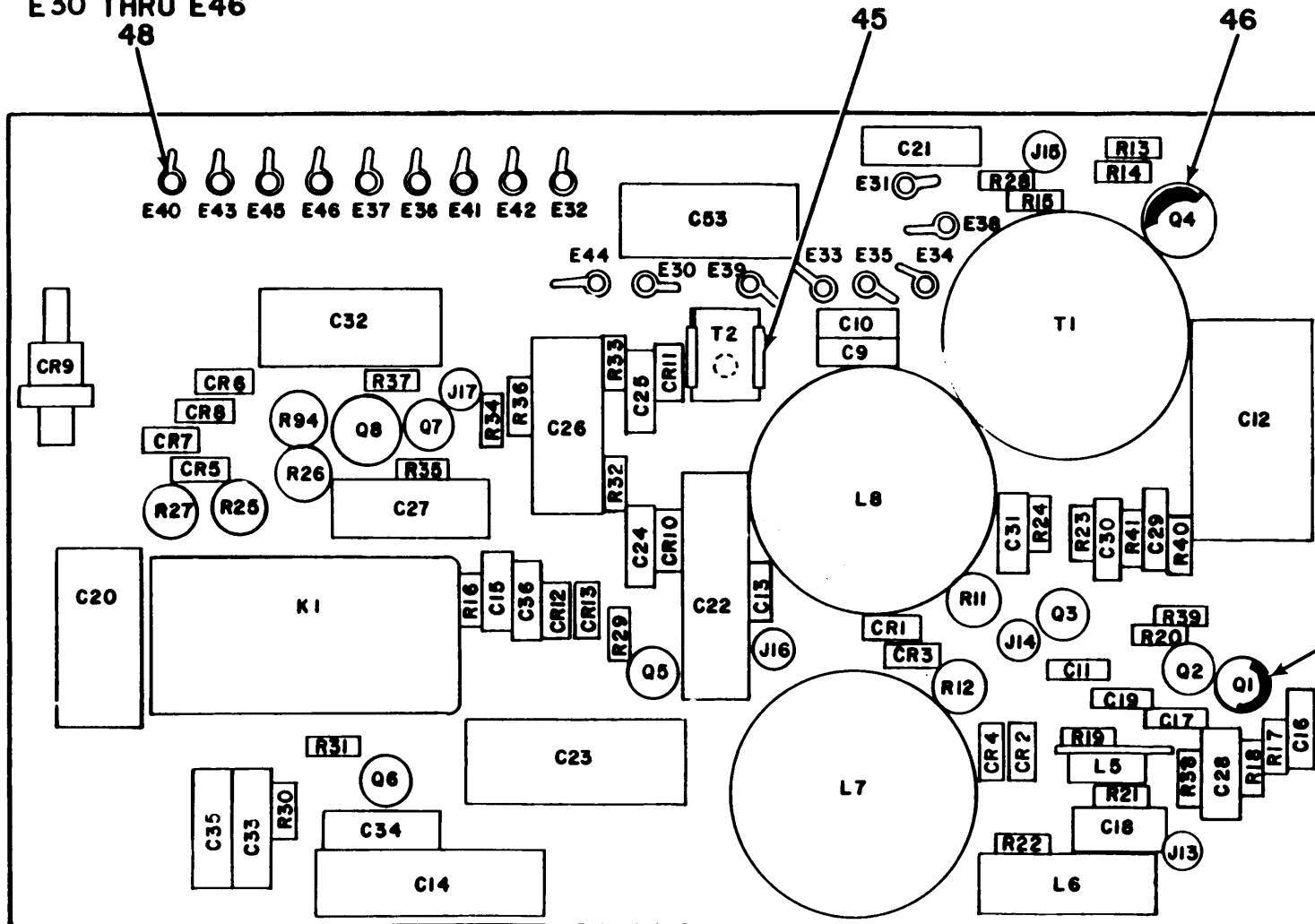
Figure 7. Case Assembly, Top.

SECTION II

(1)	(2)	(3)	(4)	(5)	(6)	(7)	(8)
ILLUSTRATION					DESCRIPTION		QTY
(a)	(b)	NATIONAL		PART			INC
FIG	ITEM	STOCK		NUMBER		USABLE ON CODE	IN
NO	NO	CODE	NUMBER	FSCM	NUMBER		UNIT
GROUP 010102 CASE ASSEMBLY, TOP							
7	1	XBHZZ		80063	SM-B-528063		EA 1
7	2	PAHZZ		80063	SM-B-528064		EA 1
7	3	XBHZZ		80063	SM-B-528171		EA 1
7	4	XBHZZ		80063	SM-E-528061		EA 1
7	5	PAHZZ		80063	SM-B-528172		EA 1
7	6	XBHZZ		80205	NAS1330A06B161		EA 14
7	7	XBHZZ		80063	SM-D-528059		EA 1
7	8	XBHZZ		80063	SM-D-528060		EA 1
7	9	PAHZZ	5325-00-263-6632	96906	MS35489-6		EA 1
7	10	XAHZZ		80063	SM-B-528160		EA 1
7	10	XAHZZ		80063	SM-B-528160		EA 1
7	11	PAHZZ	5325-00-262-9122	96906	MS21325-5		EA 2
7	12	PAHZZ	5325-00-286-2594	96906	MS21332-2		EA 2
7	13	PAHZZ	5325-00-171-4238	96906	MS21332-4		EA 2
7	14	PAHZZ	5325-00-290-4925	96906	MS21332-3		EA 2
7	15	PAHZZ	5325-00-281-8638	96906	MS21332-1		EA 2



TYPICAL  
E30 THRU E46  
48



NOTE: FOR COMPLETE REFERENCE  
DESIGNATION, PREFIX WITH 8A1

EL8RTOIO

Figure 8. Panel Assembly PCM Detector, Signaling Detector, Bridge Circuit (Sheet 1 of 2).

REF. DES.	ITEM NO.	REF. DES.	ITEM NO.	REF. DES.	ITEM NO.	REF. DES.	ITEM NO.	REF. DES.	ITEM NO.
C9	1	C28	8	CR10	14	Q6	21	R27	32
C10	1	C29	1	CR11	14	Q7	21	R28	28
C11	2	C30	1	CR12	14	Q8	22	R29	34
C12	3	C31	1	CR13	14	R11	23	R30	34
C13	4	C32	9	J13	16	R12	23	R31	35
C14	5	C33	10	J14	16	R13	24	R32	36
C15	6	C34	10	J15	16	R14	25	R33	37
C16	7	C35	10	J16	16	R15	26	R34	38
C17	2	C36	6	J17	16	R16	27	R35	24
C18	8	C53	12	K1	17	R17	25	R36	39
C19	2	CR1	14	L5	18	R18	25	R37	24
C20	9	CR2	14	L6	19	R19	28	R38	28
C21	10	CR3	14	L7	20	R20	29	R39	40
C22	5	CR4	14	L8	20	R21	25	R40	41
C23	11	CR5	14	Q1	21	R22	30	R41	41
C24	6	CR6	14	Q2	21	R23	31	R94	42
C25	6	CR7	14	Q3	21	R24	28	T1	43
C26	12	CR8	14	Q4	22	R25	32	T2	44
C27	13	CR9	15	Q5	21	R26	33		

NOTE: FOR COMPLETE REFERENCE  
DESIGNATION, PREFIX WITH 8A1

EL8RTO11

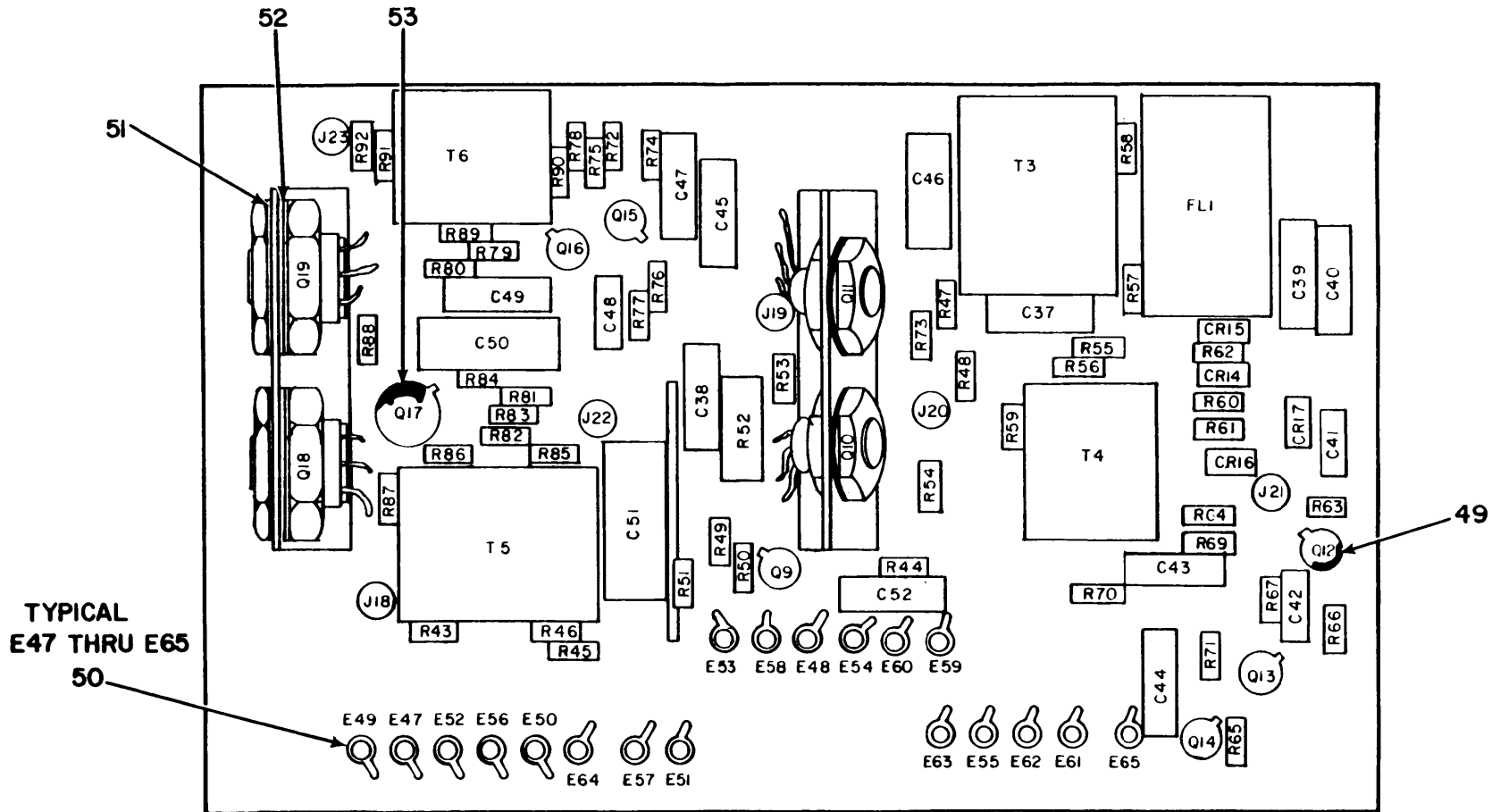
Figure 8. Panel Assembly PCM Detector, Signaling Detector, Bridge Circuit  
(Sheet 2 of 2).

SECTION II (1)		(2)	(3)	(4)	(5)	(6)	(7)	(8)
ILLUSTRATION			NATIONAL		PART			QTY
(a)	(b)		STOCK		NUMBER			INC
FIG	ITEM	SMR	NUMBER	FSCM			USABLE ON CODE	IN
NO	NO	CODE			NUMBER			UNIT
GROUP 0102 PANEL ASSEMBLY PCM DETECTOR								
SIGNAL DETECTOR, BRIDGE CIRCUIT								
8	1	PAHZZ	5910-00-455-4304	81349	M39003/01-3067	CAPACITOR, FXD, ELCTL		EA 5
8	2	PAHZZ	5910-00-098-9281	81349	M39014/05-2237	CAPACITOR, FIXED, CER		EA 3
8	3	PAHZZ	5910-00-948-6451	80063	SM-B-527511-4	CAPACITOR, FIXED, PLA		EA 1
8	4	PAHZZ	5910-00-893-6743	81349	CK06CW332K	CAPACITOR, FIXED, CER		EA 1
8	5	PAHZ	5910-00-477-7721	81349	M39022/01-1663	CAPACITOR, FIXED, MET		EA 2
8	6	PAHZZ	5910-00-495-0042	81349	M39003-01-3076	CAPACITOR, FIXED, ELE		EA 4
8	7	PAHZZ	5910-00-007-2002	81349	M39003/01-3003	CAPACITOR, FXD, ELCTL		EA 1
8	8	PAHZZ		81349	CM05P201G03	CAPACITOR, FXD, MICA		EA 2
8	9	PAHZZ	5910-00-928-1967	56289	P188746	CAPACITOR, FXD, PLSTC		EA 2
8	10	PAHZZ	5910-00-460-0842	81349	439003/01-2287	CAPACITOR, FIXED, ELE		EA 4
8	11	PAHZZ	5910-00-928-1966	80063	SM-B-527511-3	CAPACITOR, FIXED, PLA		EA 1
8	12	PAHZZ	5910-00-236-8745	81349	M39003/01-3021	CAPACITOR, FIXED, ELE		EA 2
8	13	PAHZZ	5910-00-113-5689	81349	M39003/01-3015	CAPACITOR, FIXED, ELE		EA 1
8	14	PAHZZ	5961-00-669-6884	81349	JAN1N277	SEMICONDUCTOR DEVIC		EA 12
8	15	PAHZZ	5961-00-577-6214	81349	JAN1N538	SEMICONDUCTOR DEVIC		EA 1
8	16	PAHZZ	5935-00-923-0158	80063	SM-B-526509	JACK, TIP		EA 5
8	17	PAHZZ	5945-00-948-6445	80063	SM-B-526657-1	RELAY, ELECTROMAGNET		EA 1
8	18	PAHZZ	5950-00-496-1509	96906	MS750B9-17	COIL, RADIO FREQUENC		EA 1
8	19	PAHZZ	5950-01-077-2397	96906	MS21380-17	COIL, RADIO FREQUENC		EA 1
8	20	PAHZZ	5950-00-999-7379	80063	SM-B-52B033	REACTOR		EA 2
8	21	PAHZZ	5961-00-811-4707	81349	JAN2N705	TRANSISTOR		EA 6
8	22	PAHZZ	5961-00-984-7733	81349	JAN2N42B	TRANSISTOR		EA 2
8	23	PAHZZ		81349	RBR71L10000FR	RESISTOR, FIXED, WIRE		EA 2
8	24	PAHZZ	5905-00-726-5340	81349	RC07GF101K	RESISTOR, FIXED, COMP		EA 3
8	25	PAHZZ	5905-00-105-7768	81349	RCR07G561JS	RESISTOR, FIXED, COMP		EA 4
8	26	PAHZZ	5905-00-106-3666	81349	RCR07G103JS	RESISTOR, FIXED, COMP		EA 1
8	27	PAHZZ	5905-00-120-9154	81349	RCR07G471JS	RESISTOR, FIXED, COMP		EA 1
8	28	PAHZZ	5905-00-105-7764	81349	RCR07G222JS	RESISTOR, FIXED, COMP		EA
8	29	PAHZZ	5905-00-369-6931	81349	RCR07G111JS	RESISTOR, FIXED, COMP		EA
8	30	PAHZZ	5905-00-106-1356	81349	RCR07G152JS	RESISTOR, FIXED, COMP		EA 1
8	31	PAHZZ	5905-00-126-6692	81349	RCR07G620JS	RESISTSOR, FIXED, COMP		EA 1
8	32	PAHZZ	5905-00-164-9824	81349	RBR71L49R90FR	RESISTOR, FIXED, WIRE		EA 2
8	33	PAHZZ	5905-00-926-2896	81349	R871CE12400F	RESISTOR, FIXED,		EA 1
8	34	PAHZZ	5905-00-110-7620	81349	RCR07G102JS	RESISTOR, FIXED, COMP		EA 2
8	35	PAHZZ	5905-00-121-9932	81349	RCR07G39LJS	RESISTOR, FIXED, COMP		EA 1
8	36	PAHZZ	5905-00-116-8555	81349	RCR07G153JS	RESISTOR, FIXED, COMP		EA 1
8	37	PAHZZ	5905-00-104-8358	81349	RCR07G822JS	RESISTOR, FIXED, COMP		EA 1
8	38	PAHZZ	5905-00-111-4727	81349	RCR07G212JS	RESISTOR, FIXED, COMP		EA 1

SECTION II

(1)	(2)	(3)	(4)	(5)	(6)	(7)	(8)
ILLUSTRATION					DESCRIPTION		QTY
(a)	(b)	NATIONAL		PART			INC
FIG	ITEM	STOCK		NUMBER		USABLE ON CODE	IN
NO	NO	SMR	NUMBER	FSCM	NUMBER		U/M
		CODE					UNIT
	39	PAHZZ	5905-00-114-0711	81349	RCR07G472JS	RESISTOR, FIXED, COMP	EA 1
8	40	PAHZZ	5905-00-136-8405	81349	RCR07G131JS	RESISTOR, FIXED, COMP	EA 1
8	41	PAHZZ	5905-00-141-0743	81349	RCR07G392JS	RESISTOR, FIXED, COMP	EA 2
8	42	PAHZZ		81349	RB71CE44000F	RESISTOR, FIXED, WW	EA 1
8	43	PAHZZ	5950-00-924-8805	80063	SM-B-528531	TRANSFORMER, AUDIO F	EA 1
8	44	PAHZZ	5950-01-104-3439	81349	M27/172-25	TRANSFORMER, AUDIO F	EA 1
8	45	PAHZZ	5340-00-088-7509	96906	MS17160-7	CLIP, SPRING TENSION	EA 1
8	46	PAHZZ	5999-00-947-8911	80063	SM-B-524516-2	MOUNTING PAD, ELECTR	EA 2
8	47	PAHZZ	5999-00-947-8905	80063	SM-B-526516-1	MOUNTING PAD, ELECTR	EA 6
8	48	XAHZZ		81349	SE12XC04	TERMINAL, STUD	EA 7





NOTE: FOR COMPLETE REFERENCE  
DESIGNATION, PREFIX WITH 8A3

EL8RTO12

REF. DES.	ITEM NO.	REF. DES.	ITEM NO.	REF. DES.	ITEM NO.	REF. DES.	ITEM NO.	REF. DES.	ITEM NO.
C37	1	CR17	7	R43	13	R62	29	R82	40
C38	1	FL1	8	R44	14	R63	30	R83	28
C39	1	J18	9	R45	15	R64	26	R84	41
C40	1	J19	9	R46	16	R65	22	R85	39
C41	2	J20	9	R47	17	R66	31	R86	42
C42	2	J21	9	R48	18	R67	32	R87	42
C43	1	J22	9	R49	19	R69	33	R88	42
C44	1	J23	9	R50	18	R70	34	R89	43
C45	1	Q9	10	R51	13	R71	35	R90	17
C46	3	Q10	11	R52	20	R72	36	R91	44
C47	1	Q11	11	R53	21	R73	37	R92	21
C48	2	Q12	10	R54	22	R74	22	T3	45
C49	1	Q13	10	R55	23	R75	31	T4	46
C50	4	Q14	10	R56	24	R76	38	T5	47
C51	5	Q15	10	R57	25	R77	26	T6	48
C52	1	Q16	10	R58	26	R78	34		
CR14	6	Q17	12	R59	27	R79	21		
CR15	6	Q18	11	R60	28	R80	39		
CR16	7	Q19	11	R61	28	R81	21		

NOTE: FOR COMPLETE REFERENCE  
DESIGNATION, PREFIX WITH 8A3

EL8RTO13

Figure 9. Panel Assembly Amplifier, Signaling, Transmit, Receive (Sheet 2 of 2).

SECTION II									
(1)	(2)	(3)	(4)	(5)	(6)	(7)	(8)		
ILLUSTRATION					DESCRIPTION		QTY		
(a)	(b)	NATIONAL		PART			INC		
FIG	ITEM	STOCK		NUMBER			IN		
NO	NO	SMR		FSCM		USABLE ON CODE	U/M	UNIT	
CODE		NUMBER							
GROUP 0104 PANEL ASSEMBLY AMPLIFIER,									
SIGNALING, TRANSMIT, RECEIVE									
9	1	PAHZZ	5910-00-460-0842	81349	M39003/01-2287	CAPACITOR, FIXED, ELE	EA		
9	2	PAHZZ	5910-00-007-2002	81349	M39003/01-3003	CAPACITOR, FXD, ELCTL	EA	3	
9	3	PAHZZ	5910-00-158-5367	81349	M39014/05-2285	CAPACITOR, FIXED, CER	EA	1	
9	4	PAHZZ	5910-00-113-5689	81349	M39003/01-3015	CAPACITOR, FIXED, ELE	EA	1	
9	5	PAHZZ	5910-00-236-8745	81349	M39003/01-3021	CAPACITOR, FIXED, ELE	EA	1	
9	6	PAHZZ	5961-00-669-6884	81349	JAN1N277	SEMICONDUCTOR DEVIC	EA	2	
9	7	PAHZZ	5961-00-842-9864	81349	JAN1N914	SEMICONDUCTOR DEVIC	EA	2	
9	8	PAHZZ	5915-00-937-4439	80063	SMB528047	FILTER, LOW PASS	EA	1	
9	9	PAHZZ	5935-00-923-0158	80063	SM-B-526509	JACK, TIP	EA	8	
9	10	PAHZZ	5961-00-811-4707	81349	JAN2N705	TRANSISTOR	EA	6	
9	11	PAHZZ	5961-00-877-7663	81349	JAN2N1042	TRANSISTOR	EA	4	
9	12	PAHZZ	5961-00-984-7733	81349	JAN2N42B	TRANSISTOR	EA	1	
9	13	PAHZZ	5905-00-120-9154	81349	RCR07G471JS	RESISTOR, FIXED, COMP	EA	2	
9	14	PAHZZ	5905-00-111-1679	81349	RCR07G512JS	RESISTOR, FIXED, COMP	EA	1	
9	15	PAHZZ	5905-00-104-8362	81349	RCR07G132JS	RESISTOR, FIXED, COMP	EA	1	
9	16	PAHZZ	5905-00-113-4863	81349	RCR07G300JS	RESISTOR, FIXED, COMP	EA	1	
9	17	PAHZZ	5905-00-114-0710	81349	RCR07G331JS	RESISTOR, FIXED, COMP	EA	2	
9	18	PAHZZ	5905-00-131-9729	81349	RCR07G302JS	RESISTOR, FIXED, COMP	EA	2	
9	19	PAHZZ	5905-00-135-3971	81349	RCR07G150JS	RESISTOR, FIXED, COMP	EA	1	
9	20	PAHZZ	5905-00-104-8355	81349	RCR32G561JS	RESISTOR, FIXED, COMP	EA	1	
9	21	PAHZZ	5905-00-726-5340	81349	RCR07GF101K	RESISTOR, FIXED, COMP	EA	1	
9	22	PAHZZ	5905-00-110-7620	81349	RCR07G102JS	RESISTOR, FIXED, COMP	EA	3	
9	23	PAHZZ	5905-00-141-1132	81349	RCR07G752JS	RESISTOR, FIXED, COMP	EA	1	
9	24	PAHZZ	5905-00-111-4750	81349	RCR07G301JS	RESISTOR, FIXED, COMP	EA	1	
9	25	PAHZZ	5905-00-111-4727	81349	RCR07G272JS	RESISTOR, FIXED, COMP	EA	1	
9	26	PAHZZ	5905-00-114-0711	81349	RCR07G472JS	RESISTOR, FIXED, COMP	EA	3	
9	27	PAHZZ	5905-00-106-1248	81349	RCR07G162JS	RESISTOR, FIXED, COMP	EA	1	
9	28	PAHZZ	5905-00-106-3666	81349	RCR07G103JS	RESISTOR, FIXED, COMP	EA		
9	29	PAHZZ	5905-00-115-3560	81349	RCR07G183JS	RESISTOR, FIXED, COMP	EA	1	
9	30	PAHZZ	5905-00-141-0744	81349	RCR07G562JS	RESISTOR, FIXED, COMP	EA	1	
9	31	PAHZZ	5905-00-136-8431	81349	RCR07G432JS	RESISTOR, FIXED, COMP	EA	1	
9	32	PAHZZ	5905-00-135-3974	81349	RCR07G431JS	RESISTOR, FIXED, COMP	EA	1	
9	33	PAHZZ	5905-00-104-8369	81349	RCR07G362JS	RESISTOR, FIXED, COMP	EA	1	
9	34	PAHZZ	5905-00-105-7764	81349	RCR07G222JS	RESISTOR, FIXED, COMP	EA	2	
9	35	PAHZZ	5905-00-111-4845	81349	RCR07G201JS	RESISTOR, FIXED, COMP	EA	1	
9	36	PAHZZ	5905-00-119-8811	81349	RCR07G151JS	RESISTOR, FIXED, COMP	EA	1	
9	37	PAHZZ	5905-00-106-1249	81349	RCR07G510JS	RESISTOR, FIXED, COMP	EA	1	
9	38	PAHZZ	5905-00-135-3973	81349	RCR07G221JS	RESISTOR, FIXED, COMP	EA	1	

SECTION II									
(1)	(2)	(3)	(4)	(5)	(6)	(7)	(8)		
ILLUSTRATION									
(a)	(b)	NATIONAL		PART		DESCRIPTION		QTY	
FIG	ITEM	SMR	STOCK	FSCM	NUMBER	USABLE ON CODE	U/M	INC	IN
NO	NO	CODE	NUMBER		NUMBER			IN	UNIT
9	39	PAHZZ	5905-00-110-7622	81349	RCR07G682JS			EA	2
9	40	PAHZZ	5905-00-126-6683	81349	RCR07G332JS			EA	1
9	41	PAHZZ	5905-00-106-1356	81349	RCR07G152JS			EA	1
9	42	PAHZZ	5905-00-106-3668	81349	RCR07G220JS			EA	3
9	43	PAHZZ	5905-00-106-9356	81349	RCR07G203JS			EA	1
9	44	PAHZZ	5905-00-107-0656	81349	RCR07G100JS			EA	1
9	45	PAHZZ	5950-00-941-2401	49956	292-10110			EA	1
9	46	PAHZZ		19901	AE4818			EA	1
9	47	PAHZZ	5950-00-930-1301	80063	SM-B-528031			EA	1
9	48	PAHZZ	5950-00-930-1302	80063	SM-B-528032			EA	1
9	49	PAHZZ	5999-00-947-8905	80063	SM-B-526516-1			EA	6
9	50	PAHZZ	5940-00-082-4861	81349	SE12XC04			EA	19
9	51	PAHZZ		91747	293207			EA	8
9	52	PAHZZ		91747	293017			EA	4
9	53	PAHZZ	5999-00-947-8911	80063	SM-B-526516-2			EA	1

NATIONAL STOCK NUMBER AND PART NUMBER INDEX

STOCK NUMBER	FIGURE NO.	ITEM NO.	STOCK NUMBER	FIGURE NO.	ITEM NO.
5910-00-007-2002	8	7	5325-00-171-4238	7	13
5910-00-007-2002	9	2	5340-00-172-8382	3	39
5305-00-022-7100	3	15	5310-00-193-7577	3	38
5305-00-032-4119	3	10	5975-00-228-0038	5	12
5305-00-032-4197	2	19	5910-00-236-8745	8	12
5305-00-054-5646	2	29	5910-00-236-8745	9	5
5305-00-054-5647	3	7	5940-00-242-0952	2	10
5305-00-054-6651	3	47	5330-00-248-3842	2	7
5305-00-054-6652	3	29	5325-00-262-9122	7	11
5305-00-054-6653	2	37	5325-00-263-6632	7	9
5305-00-054-6654	3	20	5310-00-271-4642	3	8
5305-00-054-6654	5	10	5325-00-281-8638	7	15
5305-00-054-6656	3	18	5325-00-286-2594	7	12
5305-00-054-6671	2	20	5325-00-290-4925	7	14
5305-00-059-3660	5	4	5365-00-302-8098	3	17
5340-00-078-3615	2	27	5365-00-302-8099	3	36
5940-00-082-4861	9	50	5905-00-369-6931	6	29
5340-00-088-7509	8	45	5340-00-419-0840	3	19
5910-00-089-4429	3	2	5340-00-449-4506	3	35
5910-00-098-9281	8	2	5910-00-455-4304	8	1
5905-00-104-8355	9	20	5910-00-460-0842	8	10
5905-00-104-8358	8	37	5910-00-460-0842	9	1
5905-00-104-8362	9	15	5910-00-477-7721	8	5
5905-00-104-8369	9	33	5910-00-495-0042	8	6
5905-00-105-7764	8	28	5950-00-496-1509	8	18
5905-00-105-7764	9	34	5310-00-543-5933	5	5
5905-00-105-7768	8	25	5935-00-549-2646	2	14
5905-00-106-1248	9	27	5310-00-550-3715	2	28
5905-00-106-1249	9	37	5330-00-551-8251	2	17
5905-00-106-1356	8	30	5355-00-556-0145	2	16
5905-00-106-1356	9	41	5961-00-577-6214	8	15
5905-00-106-3666	8	26	5310-00-616-3555	3	21
5905-00-106-3666	9	28	5310-00-616-3555	5	11
5905-00-106-3668	9	42	5930-00-655-1514	2	13
5905-00-106-9356	9	43	5930-00-655-1581	2	8
5905-00-107-0656	9	44	5930-00-655-1582	2	24
5905-00-110-7620	8	34	5965-00-669-6871	1	4
5905-00-110-7620	9	22	5961-00-669-6884	8	14
5905-00-110-7622	9	39	5961-00-669-6884	9	6
5905-00-111-1679	9	14	5355-00-682-6753	2	5
5905-00-111-4727	8	38	5305-00-719-5064	3	33
5905-00-111-4727	9	25	5310-00-722-5998	3	49
5905-00-111-4750	9	24	5905-00-726-5340	8	24
5905-00-111-4845	9	35	5905-00-726-5340	9	21
5905-00-113-4863	9	16	5305-00-763-7822	3	22
5910-00-113-5689	8	13	5340-00-782-8737	3	16
5910-00-113-5689	9	4	5330-00-806-8769	2	23
5905-00-114-0710	9	17	5961-00-811-4707	8	21
5905-00-114-0711	8	39	5961-00-811-4707	9	10
5905-00-114-0711	9	26	5961-00-842-9864	9	7
5905-00-115-3560	9	29	5961-00-877-7663	9	11
5905-00-116-8555	8	36	5310-00-880-5978	2	45
5320-00-117-6826	4	14	5910-00-893-6743	8	4
5320-00-117-6938	4	5	6625-00-900-9416	1	1
5320-00-117-6939	4	7	5930-00-914-6364	2	6
5320-00-117-6950	4	2	5905-00-917-7066	2	42
5320-00-117-6951	4	4	5930-00-918-7806	2	11
5320-00-117-6952	3	25	5935-00-923-0158	8	16
5905-00-119-8811	9	36	5935-00-923-0158	9	9
5905-00-120-9154	8	27	5950-00-924-8805	8	43
5905-00-120-9154	9	13	5935-00-926-0649	2	2
5905-00-121-9932	8	35	6350-00-926-1321	3	32
5905-00-126-6683	9	40	5905-00-926-2896	8	33
5905-00-126-6692	8	31	5940-00-926-8162	2	3
5905-00-131-9729	9	18	5910-00-928-1966	8	11
5905-00-135-3971	9	19	5910-00-928-1967	8	9
5905-00-135-3973	9	38	6625-00-929-8405	3	42
5905-00-135-3974	9	32	5950-00-930-1301	9	47
5905-00-136-8405	8	40	5950-00-930-1302	9	48
5905-00-136-8431	9	31	6625-00-935-1375	2	25
5905-00-141-0743	8	41	5305-00-937-1776	3	44
5905-00-141-0744	9	30	5915-00-937-4439	9	8
5905-00-141-1132	9	23	5940-00-937-5237	2	4
6240-00-155-7857	2	15	5950-00-941-2401	9	45
5910-00-158-5367	9	3	6625-00-941-2987	3	28
5330-00-159-3238	2	9	6625-00-941-2997	3	24
5330-00-159-3264	2	21	6625-00-941-3000	1	3
5330-00-159-3271	3	43	5935-00-946-1272	2	1
5310-00-159-6220	2	41	5930-00-947-1911	2	34
5905-00-164-9824	8	32	5930-00-947-1912	2	35

## NATIONAL STOCK NUMBER AND PART NUMBER INDEX

STOCK NUMBER		FIGURE NO.	ITEM NO.	STOCK NUMBER	FIGURE NO.	ITEM NO.	
5999-00-947-8905		8	47	5310-00-982-6814	2	44	
5999-00-947-8905		9	49	5961-00-984-7733	8	22	
5999-00-947-8911		8	46	5961-00-984-7733	9	12	
5999-00-967-8911		9	53	5910-00-999-6710	3	23	
5945-00-948-6445		8	17	5950-00-999-7379	8	20	
5910-00-948-6451		8	3	5305-01-015-4965	3	31	
5325-00-960-2410		2	32	5950-01-077-2397	8	19	
5340-00-964-2555		2	39	5950-01-104-3439	8	44	
5310-00-982-6813		2	36				
FSCM	PART NUMBER	FIGURE NO.	ITEM NO.	FSCM	PART NUMBER	FIGURE NO.	ITEM NO.
19901	AE4818	9	46	96906	MS9021-028	2	17
88044	AN5L0C3-5	3	12	96906	MS91528-1F1B	2	5
81349	CK06CW332K	8	4	96906	MS91528-1K2B	2	16
81349	CM05201G03	8	8	81349	M27/172-25	8	44
80058	CX-10354/PTM-7	1	2	81349	M39003-01-3076	8	6
81349	H91A/U	1	4	81349	M39003/01-2287	8	10
81349	JAN1N277	8	14	81349	M39003/01-2287	9	1
81349	JAN1N277	9	6	81349	M39003/01-3003	8	7
81349	JAN1N538	8	15	81349	M39003/01-3003	9	2
81349	JAN1N914	9	7	81349	M39003/01-3015	8	13
81349	JAN2N1042	9	11	81349	M39003/01-3015	9	4
81349	JAN2N428	8	22	81349	M39003/01-3021	8	12
81349	JAN2N428	9	12	81349	M39003/01-3021	9	5
81349	JAN2N705	8	21	81349	M39003/01-3067	8	1
81349	JAN2N705	9	10	81349	M39003/05-2237	8	2
81349	MILC6136TYPE2	5	12	81349	M39014/05-2285	9	3
96906	MS15795-805	3	49	81349	M39022/01-1663	8	5
96906	MS15795-807	2	45	80205	NAS1330A068A61	6	5
96906	MS17160-7	8	45	80205	NAS1330A068161	7	6
96906	MS20426AD3-5	4	7	80205	NAS1330A38166	6	4
96906	MS20426AD4-5	4	2	80205	NAS1397P4N	3	16
96906	MS20426AD4-6	4	4	80205	NAS1397P6N	2	39
96906	MS20426AD4-7	3	25	80205	NAS1397R2B	2	46
96906	MS20470AD4-4	4	14	80205	NAS1397R3B	3	39
96906	MS21044C06	2	36	80205	NAS1397R5B	3	35
96906	MS21044C08	2	44	80205	NAS43DD1-16	3	17
96906	MS21060-08	4	8	81349	PB08NA01	2	4
96906	MS21266-1N	2	32	81349	PB08NA02	2	3
96906	MS21322-33	2	27	56289	P188746	8	9
96906	MS21322-35	3	19	81349	RBR71L10000FR	8	23
96906	MS21322-38	2	33	81349	RBR71L49R90FR	8	32
96906	MS21325-5	7	11	81349	RB71CE12400F	8	33
96906	MS21332-1	7	15	81349	RB71CE44000F	8	42
96906	MS21332-2	7	12	81349	RCR07G100JS	9	44
96906	MS21332-3	7	14	81349	RCR07G102JS	8	34
96906	MS21332-4	7	13	81349	RCR07G102JS	9	22
96906	MS21380-17	8	19	81349	RCR07G103JS	8	26
96906	MS25068-23	2	8	81349	RCR07G103JS	9	28
96906	MS25196-1	2	23	81349	RCR07G111JS	8	29
96906	MS25237-328	2	15	81349	RCR07G131JS	8	40
96906	MS29513-017	2	7	81349	RCR07G132JS	9	15
96906	MS35058-22	2	13	81349	RCR07G150JS	9	19
96906	MS35059-23	2	24	81349	RCR07G151JS	9	36
96906	MS35233-34	3	31	81349	RCR07G152JS	8	30
96906	MS35249-36	3	15	81349	RCR07G152JS	9	41
96906	MS35333-36	3	38	81349	RCR07G153JS	8	36
96906	MS35333-70	2	28	81349	RCR07G162JS	9	27
96906	MS35333-71	3	21	81349	RCR07G183JS	9	29
96906	MS35333-71	5	11	81349	RCR07G201JS	9	35
96906	MS35333-73	5	5	81349	RCR07G203JS	9	43
96906	MS35489-6	7	9	81349	RCR07G220JS	9	42
96906	MS35649-44	3	8	81349	RCR07G221JS	9	38
96906	MS51925-10	5	2	81349	RCR07G222JS	8	28
96906	MS51957-12	2	29	81349	RCR07G222JS	9	34
96906	MS51957-13	3	7	81349	RCR07G272JS	8	38
96906	MS51957-27	3	47	81349	RCR07G272JS	9	25
96906	MS51957-28	3	29	81349	RCR07G300JS	9	16
96906	MS51957-29	2	37	81349	RCR07G301JS	9	24
96906	MS51957-30	3	20	81349	RCR07G302JS	9	18
96906	MS51957-30	5	10	81349	RCR07G331JS	9	17
96906	MS51957-32	3	18	81349	RCR07G332JS	9	40
96906	MS51957-46	2	20	81349	RCR07G362JS	9	33
96906	MS51958-64	5	4	81349	RCR07G391JS	8	35
96906	MS51959-14	3	22	81349	RCR07G392JS	8	41
96906	MS51959-30	3	33	81349	RCR07G431JS	9	32
96906	MS75089-17	8	18	81349	RCR07G432JS	9	31

## NATIONAL STOCK NUMBER AND PART NUMBER INDEX

FSCM	PART NUMBER	FIGURE		ITEM		FSCM	PART NUMBER	FIGURE	ITEM
		NO.	NO.	NO.	NO.				
81349	RCR07G47LJS	8	27	80063		SM-B-528095		2	18
81349	RCR07G471JS	9	13	80063		SM-B-528102		4	3
81349	RCR07G472JS	8	39	80063		SM-B-528135		5	6
81349	RCR07G4742JS	9	26	80063		SM-B-528137		2	25
81349	RCR07G510JS	9	37	80063		SM-B-528143		5	7
81349	RCR07G512JS	9	14	80063		SM-B-528144		5	8
81349	RCR07G561JS	8	25	80063		SM-B-528145		4	13
81349	RCR07G562JS	9	30	80063		SM-B-528155-2		3	6
81349	RCR07G620JS	8	31	80063		SM-B-528157-1		3	14
81349	RCR07G682JS	9	39	80063		SM-B-528160		7	10
81349	RCR07G752JS	9	23	80063		SB-B-528169		3	3
81349	RCR07G822JS	8	37	80063		SM-B-528171		7	3
81349	RCR32G651JS	9	20	80063		SM-B-528172		7	5
81349	RC07GF101K	8	24	80063		SM-B-528531		8	43
81349	RC07GF101K	9	21	80063		SM-B-528539		2	41
81349	RNC60J2870FS	2	49	80063		SM-B-528545-1		2	10
81349	SE12XC04	8	48	80063		SM-B-528546		2	40
81349	SE12XC04	9	50	80063		SM-B-528555-2		2	21
81349	SE209D0-1	3	37	80063		SM-B-52855-3		3	43
80063	SM-B-422926-1	3	44	80063		SM-B-528627-3		3	4
80063	SM-B-526509	8	16	80063		SM-B-528627-4		3	10
80063	SM-B-526509	9	9	80063		SM-B-528643-1		3	9
80063	SM-B-526516-1	8	47	80063		SM-B-529127-2		3	13
80063	SM-B-526516-1	9	49	80063		SM-B-529129-2		4	11
80063	SM-B-526516-2	8	43	80063		SM-B-529173-2		2	22
80063	SM-B-526516-2	9	53	80063		SM-B-528006		3	42
80063	SM-B-526603-1	2	19	80063		SM-C-528074		1	3
80063	SM-B-526614	2	30	80063		SM-C-528098		3	1
80063	SM-B-526623	3	34	80063		SM-C-528125		2	35
80063	SM-B-526657-1	8	17	80063		SM-C-528126		2	34
80063	SM-B-527043-2	4	6	80063		SM-C-528133		2	1
80063	SM-B-527093-GRI	4	17	80063		SM-C-528134		2	2
80063	SM-B-527511-3	8	11	80063		SM-D-528004		3	28
80063	SM-B-527511-4	8	3	80063		SM-D-528008		3	24
80063	SM-B-527552-2	3	48	80063		SM-D-528050		6	1
80063	SM-B-527553-10	2	38	80063		SM-D-528051		6	2
80063	SM-B-527621-3	2	26	80063		SM-D-528059		7	7
80063	SM-B-528003	3	23	80063		SM-D-528060		7	8
80063	SM-B-528015	5	1	80063		SM-D-528099		3	11
80063	SM-B-528021	3	32	80063		SM-D-528100		3	5
80063	SM-B-528024	2	11	80063		SM-E-528049		5	13
80063	SM-B-528029	2	12	80063		SM-E-528058		5	16
80063	SM-B-528031	9	47	80063		SM-E-528061		7	4
80063	SM-B-528032	9	48	80063		SM-E-528092		3	30
80063	SM-B-528033	8	20	80063		SM-E-528093		3	40
80063	SM-B-528042	2	47	80063		SM-E-528106		3	41
80063	SM-B-528043	2	6	80063		SM-E-528106-1		4	15
80063	SM-B-528044	2	42	80063		SM-E-528106-2		4	1
80063	SM-B-528053	6	3	80063		SM-E-528106-3		4	9
80063	SM-B-528056	6	6	80063		SM-E-528106-4		4	12
80063	SM-B-528056-1	6	7	80063		SM-E-528106-5		4	10
80063	SM-B-528057	6	8	80063		SM-E-528106-6		4	16
80063	SM-B-528063	7	1	80063		SM-E-528112		2	31
80063	SM-B-528064	7	2	80063		SMB528047		9	8
80063	SM-B-528066	5	9	80058		TS-1323/PTM-7		1	1
80063	SM-B-528067	5	15	81349		U-79/U		2	14
80063	SM-B-528068	5	14	73899		V CJ2442		3	2
80063	SM-B-528070	5	3	49956		292-10110		9	45
80063	SM-B-528085	3	46	91747		293017		9	52
80063	SM-B-528086	3	26	91747		293207		9	51
80063	SM-B-528087	3	45	80205		43DD1-32		3	36
80063	SM-B-528088	3	27	18876		801118		4	5
80063	SM-B-528094	2	9						





RECOMMENDED CHANGES TO EQUIPMENT TECHNICAL PUBLICATIONS



THEN... JOT DOWN THE DOPE ABOUT IT ON THIS FORM. CAREFULLY TEAR IT OUT. FOLD IT AND DROP IT IN THE MAIL!

SOMETHING WRONG WITH THIS PUBLICATION?

FROM (PRINT YOUR UNIT'S COMPLETE ADDRESS)  
 Commander  
 Stateside Army Depot  
 ATTN: AMSTA-US  
 Stateside, N.J. 07703

DATE SENT  
 10 July 1975

PUBLICATION NUMBER

TM 11-5840-340-20P

PUBLICATION DATE

23 Jan 78

PUBLICATION TITLE

Radar Set AN/PRC-76

BE EXACT PIN-POINT WHERE IT IS

PAGE NO	PARA-GRAPH	FIGURE NO	TABLE NO
33			
44		19	
45			

IN THIS SPACE TELL WHAT IS WRONG AND WHAT SHOULD BE DONE ABOUT IT:

For item 2, change the NSN to read: 5835-00-134-9186.  
 Reason: Accuracy.

Identify the cover on the junction box (item no. 5).  
 Reason: It is a separate item and is not called out on figure 19.

Add the cover of the junction box as an item in the listing for figure 19.  
 Reason: Same as above

EXAMPLE

\$

TEAR ALONG PERFORATED LINE

PRINTED NAME GRADE OR TITLE AND TELEPHONE NUMBER  
 SSG I. M. DeSpirt of 999-1776

SIGN HERE

DA FORM 2028-2  
 1 JUL 79

PREVIOUS EDITIONS ARE OBSOLETE.

PS--IF YOUR OUTFIT WANTS TO KNOW ABOUT YOUR RECOMMENDATION MAKE A CARBON COPY OF THIS AND GIVE IT TO YOUR HEADQUARTERS

FILL IN YOUR  
UNIT'S ADDRESS

FOLD BACK

DEPARTMENT OF THE ARMY

\_\_\_\_\_  
\_\_\_\_\_

OFFICIAL BUSINESS  
PENALTY FOR PRIVATE USE \$300

POSTAGE AND FEES PAID  
DEPARTMENT OF THE ARMY  
DOD 314



**SAMPLE**

Commander  
US Army Communications-Electronics Command  
and Fort Monmouth  
ATTN: DRSEL-ME-MP  
Fort Monmouth, New Jersey 07703

TEAR ALONG PERFORATED LINE



FILL IN YOUR  
UNIT'S ADDRESS

FOLD BACK

DEPARTMENT OF THE ARMY

\_\_\_\_\_  
\_\_\_\_\_

OFFICIAL BUSINESS  
PENALTY FOR PRIVATE USE \$300

POSTAGE AND FEES PAID  
DEPARTMENT OF THE ARMY  
DOD 314



TEAR ALONG PERFORATED LINE

Commander  
US Army Communications-Electronics Command  
and Fort Monmouth  
ATTN: DRSEL-ME-MP  
Fort Monmouth, New Jersey 07703

RECOMMENDED CHANGES TO EQUIPMENT TECHNICAL PUBLICATIONS



THEN...JOT DOWN THE DOPE ABOUT IT ON THIS FORM. CAREFULLY TEAR IT OUT, FOLD IT AND DROP IT IN THE MAIL.

SOMETHING WRONG WITH THIS PUBLICATION?

FROM: (PRINT YOUR UNIT'S COMPLETE ADDRESS)

DATE SENT

PUBLICATION NUMBER

TM 11-6625-648-24P-1

PUBLICATION DATE

25 Aug 1983

PUBLICATION TITLE

Test Set, Telephone AN/PTM-7

BE EXACT PIN-POINT WHERE IT IS

PAGE NO.	PARA-GRAPH	FIGURE NO.	TABLE NO.

IN THIS SPACE TELL WHAT IS WRONG AND WHAT SHOULD BE DONE ABOUT IT:

TEAR ALONG PERFORATED LINE

PRINTED NAME GRADE OR TITLE AND TELEPHONE NUMBER

SIGN HERE

DA FORM 2028-2 JUL 79

PREVIOUS EDITIONS ARE OBSOLETE

P.S.--IF YOUR OUTFIT WANTS TO KNOW ABOUT YOUR RECOMMENDATION MAKE A CARBON COPY OF THIS AND GIVE IT TO YOUR HEADQUARTERS.

FILL IN YOUR  
UNIT'S ADDRESS

FOLD BACK

DEPARTMENT OF THE ARMY

\_\_\_\_\_  
\_\_\_\_\_

OFFICIAL BUSINESS  
PENALTY FOR PRIVATE USE \$300

POSTAGE AND FEES PAID  
DEPARTMENT OF THE ARMY  
DOD 314



TEAR ALONG PERFORATED LINE

Commander  
US Army Communications-Electronics Command  
and Fort Monmouth  
ATTN: DRSEL-ME-MP  
Fort Monmouth, New Jersey 07703



FILL IN YOUR  
UNIT'S ADDRESS

FOLD BACK

DEPARTMENT OF THE ARMY

\_\_\_\_\_  
\_\_\_\_\_

OFFICIAL BUSINESS  
PENALTY FOR PRIVATE USE \$300

POSTAGE AND FEES PAID  
DEPARTMENT OF THE ARMY  
DOD 314



TEAR ALONG PERFORATED LINE

Commander  
US Army Communications-Electronics Command  
and Fort Monmouth  
ATTN: DRSEL-ME-MP  
Fort Monmouth, New Jersey 07703



By Order of the Secretary of the Army:

JOHN A. WICKHAM JR.  
*General, United States Army*  
*Chief of Staff*

Official:

ROBERT M. JOYCE  
*Major General, United States Army*  
*The Adjutant General*

DISTRIBUTION :

To be distributed in accordance with Special List.

\* U.S. GOVERNMENT PRINTING OFFICE : 1984 O - 461-202 (11593)

FIN: 020919-000





